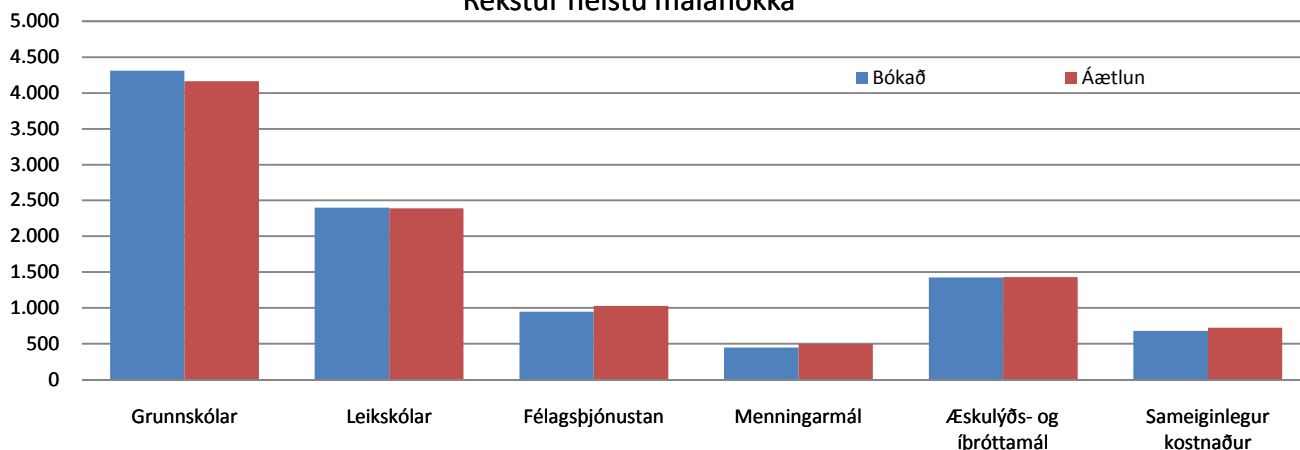


Fjármál

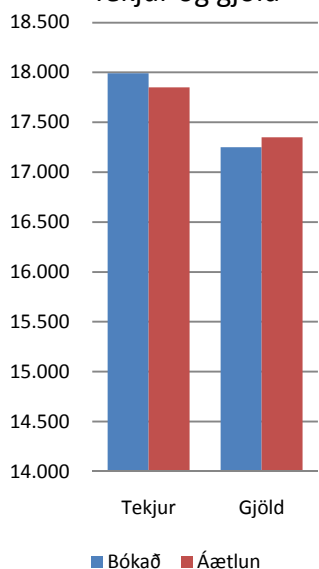
	Bókað	Áætlun	Mismunur	%
Tekjur	17.990.216.219	17.849.025.142	141.191.077	101
Gjöld án fjármagnsliða	17.249.330.052	17.351.245.599	-101.915.547	99
	Bókað	Áætlun		
Grunnskólar	4.312.136.514	4.161.938.941	150.197.573	104
Leikskólar	2.397.438.347	2.389.573.143	7.865.204	100
Félagsþjónustan	947.763.247	1.029.544.996	-81.781.749	92
Menningarmál	449.842.379	496.326.139	-46.483.760	91
Æskulýðs- og íþróttamál	1.426.051.944	1.432.210.177	-6.158.233	100
Sameiginlegur kostnaður	678.935.600	724.588.535	-45.652.935	94

Framlagt rekstraryfirlit síðasta árs er með þeim fyrirvara að enn á eftir að framkvæma færslur í bókhaldi og breytingar munu verða í ársreikningi. Rekstraryfirlitið gefur þó góða vísbendingu um stöðuna þann 31. desember sl.

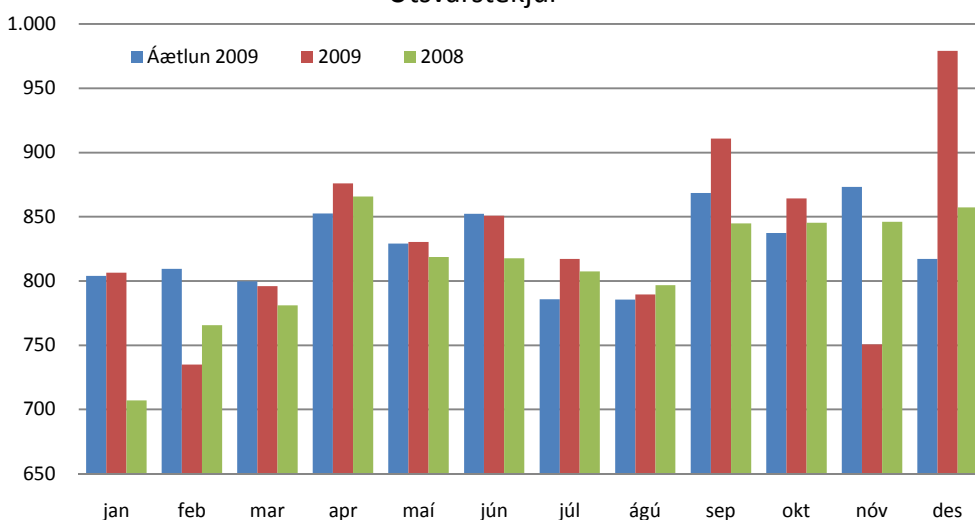
Rekstur helstu málaflokka



Tekjur og gjöld



Útsvarstekjur

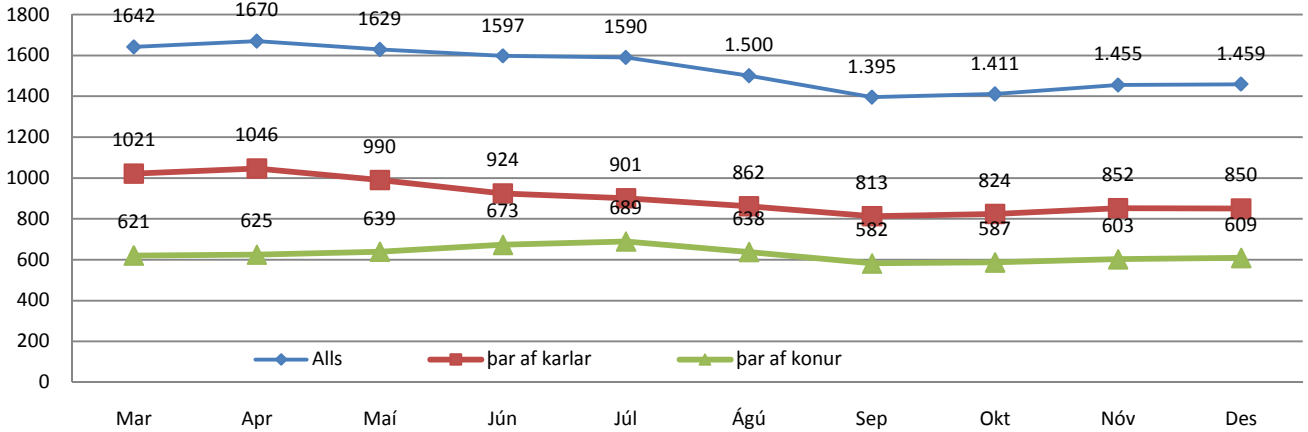


Þróun erlends lánasafns 2009

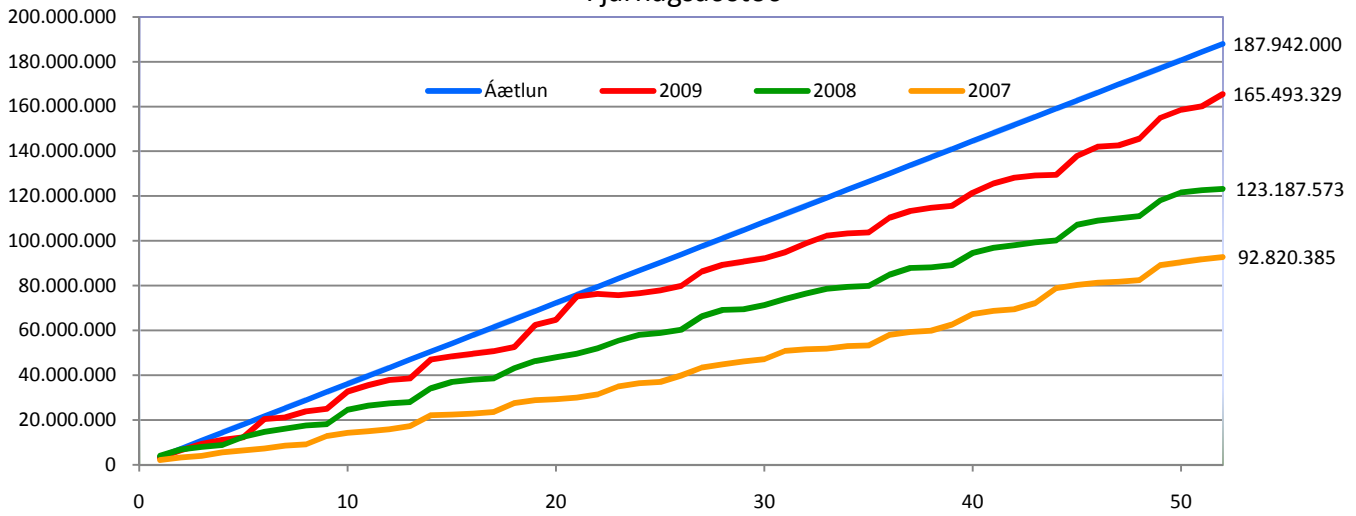
Mynt	Vextir	Hlutfall	Staða ISK	Gengishagnaður	Hlutfall hagnaðar	Hagnaður v/körfu	Staða myntar	Gengi
CAD	0,30%	2,31%	311.069.350	-51.846.015	6,89%	-31.987.694	2.605.489	119,39
CHF	0,11%	7,76%	1.043.412.412	-68.044.395	9,05%	7.021.809	8.585.030	121,60
EUR	0,99%	71,12%	9.560.140.000	-526.820.000	70,05%	162.968.688	53.000.000	180,38
GBP	0,52%	1,91%	256.342.070	-33.202.909	4,41%	-16.171.629	1.268.455	202,09
JPY	0,17%	4,52%	607.378.280	-7.431.458	0,99%	38.868.873	448.452.238	1,3555
SEK	0,49%	1,10%	147.208.215	-16.391.706	2,18%	-6.366.304	8.380.292	17,566
USD	0,23%	11,28%	1.516.066.298	-48.332.603	6,43%	63.886.206	12.109.156	125,20
Samtals	0,77%	100%	13.441.616.625	-752.069.086	-5,60%	218.219.949		

Félagsþjónusta

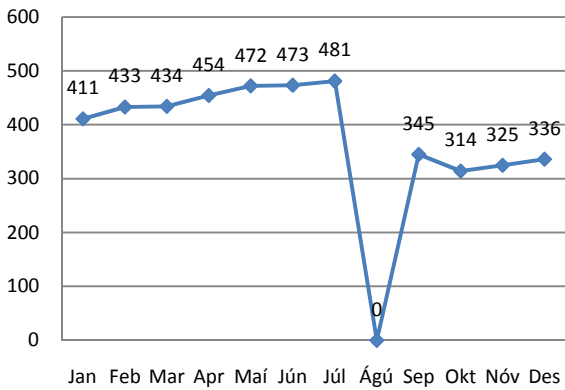
Fjöldi atvinnulausra á skrá í Kópavogi 2009



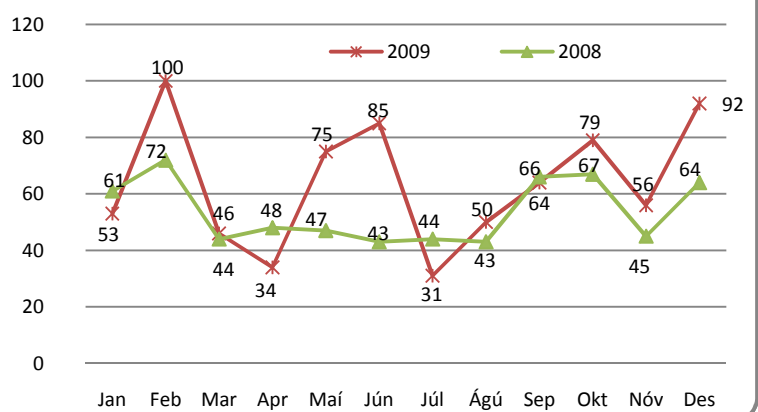
Fjárhagsaðstoð



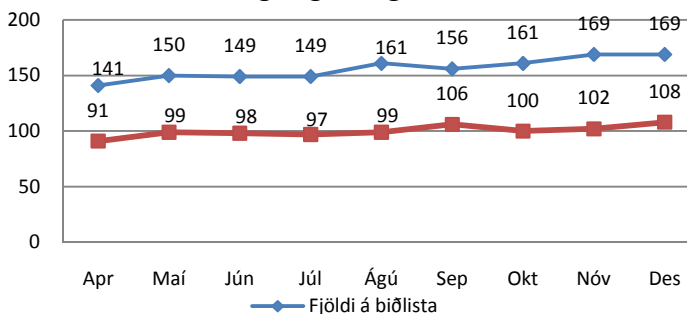
Heimgreiðslur



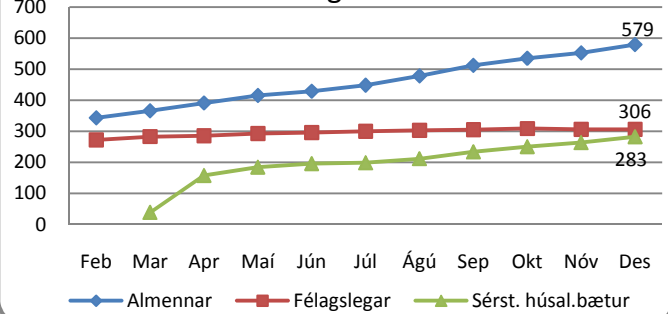
Fjöldi barnaverndartilkynninga 2008 og 2009



Félagslegar leiguíbúðir

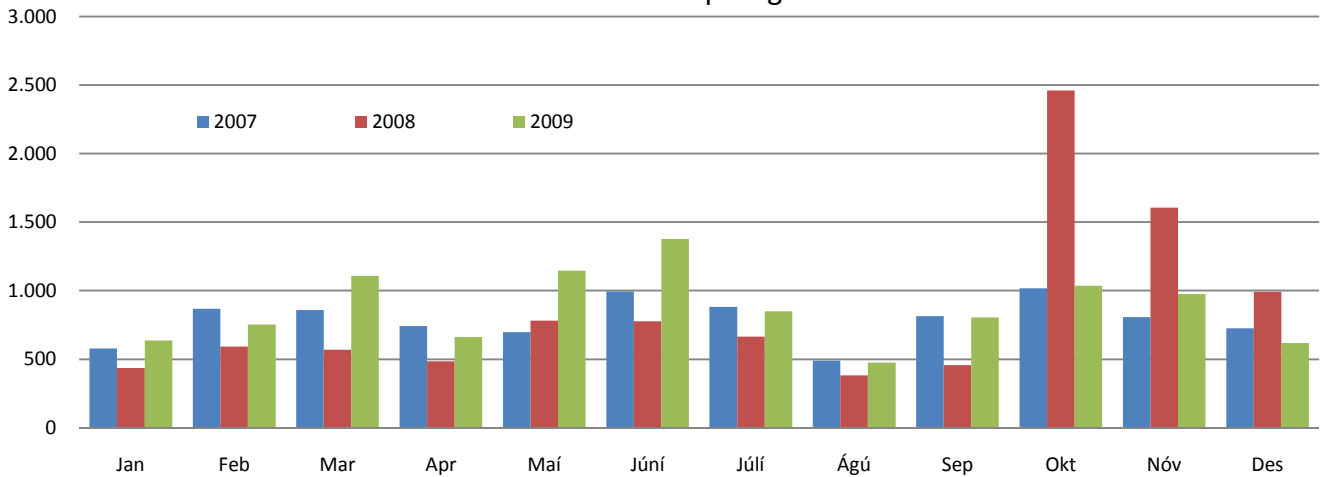


Húsaleigubætur

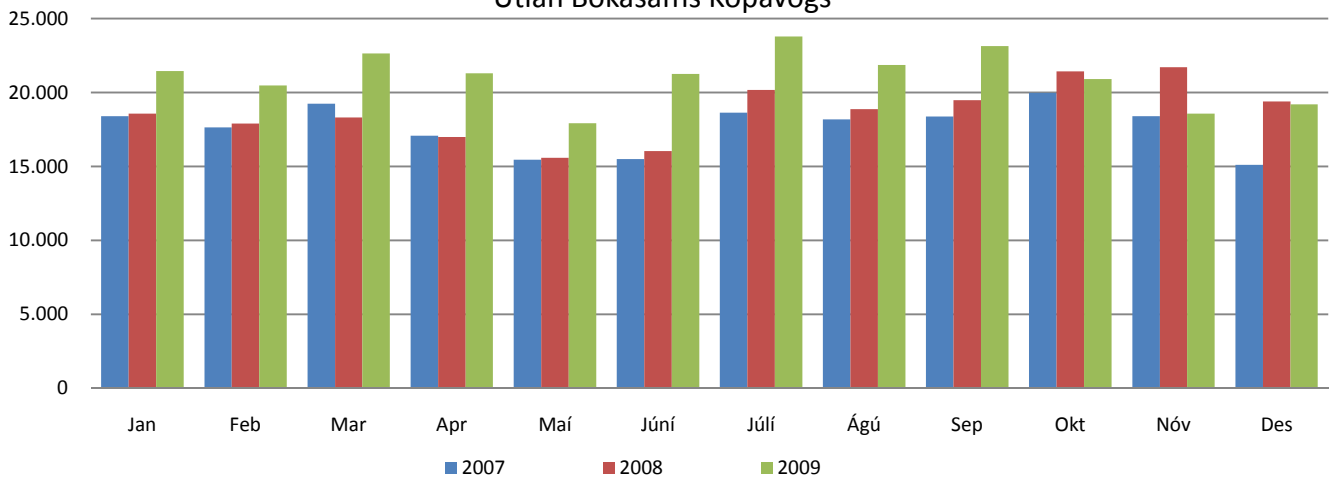


Nýting þjónustu

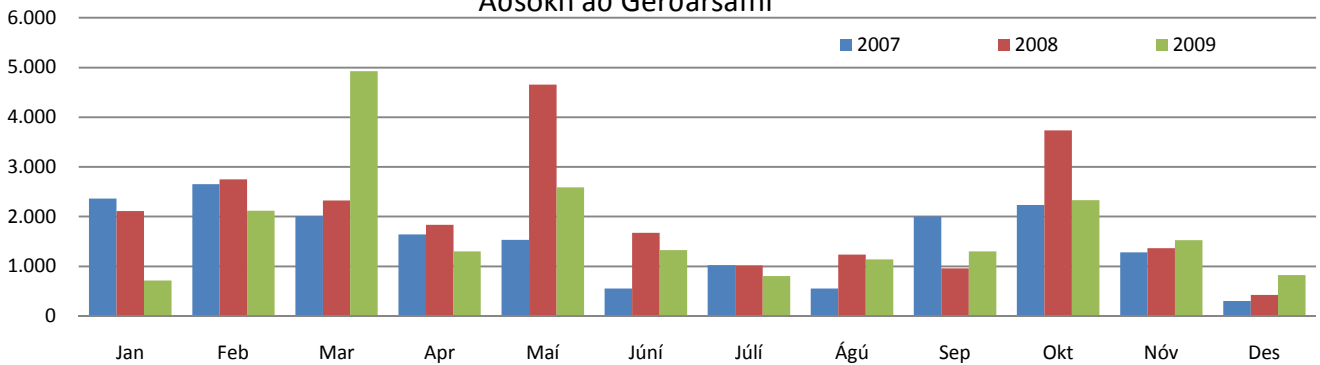
Aðsókn að Náttúrufræðistofu Kópavogs



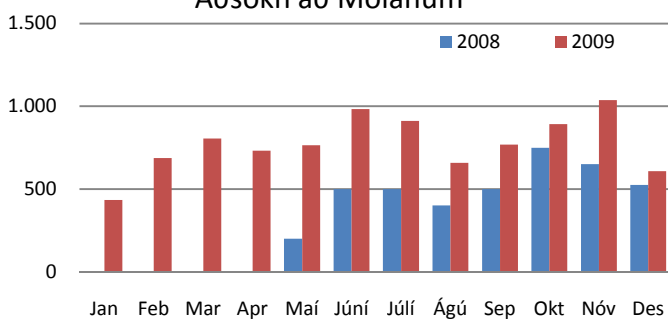
Útlán Bókasafns Kópavogs



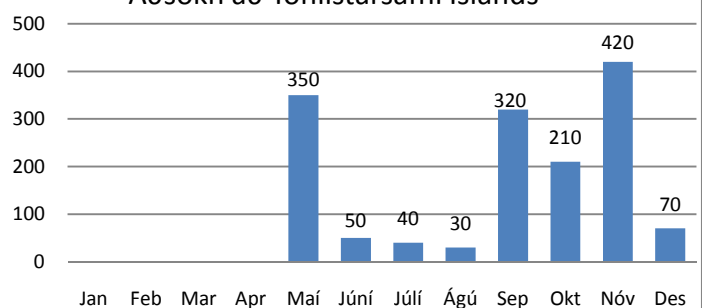
Aðsókn að Gerðarsafni



Aðsókn að Molanum

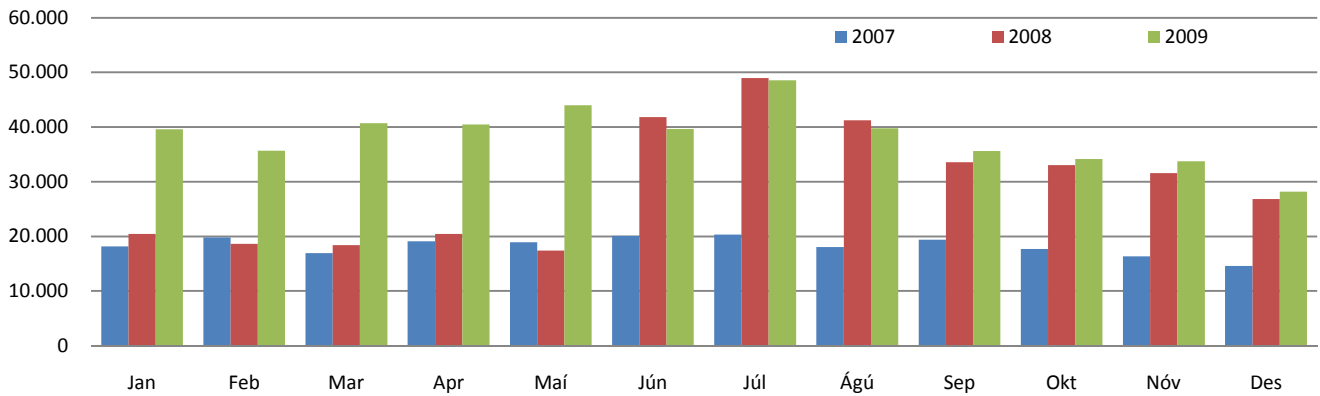


Aðsókn að Tónlistarsafni Íslands

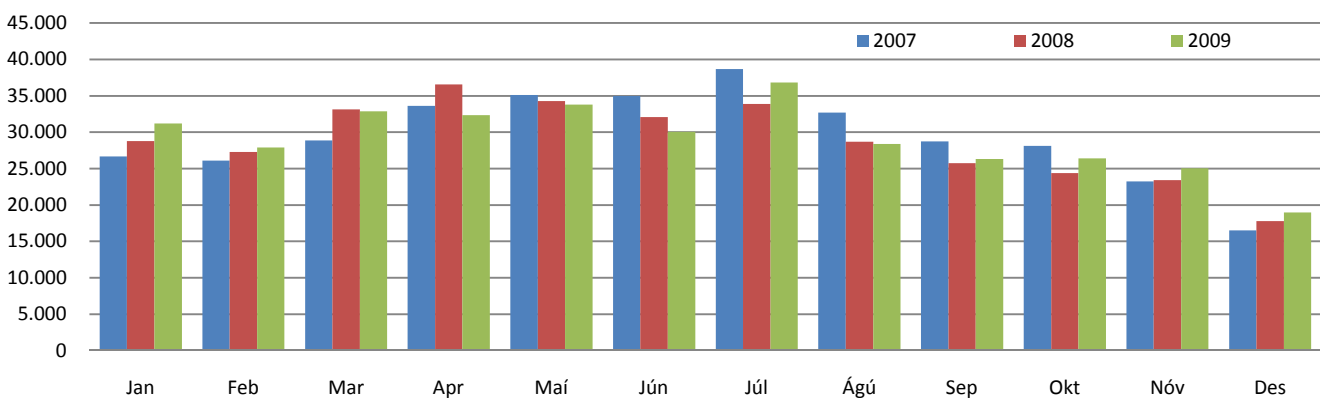


Nýting þjónustu

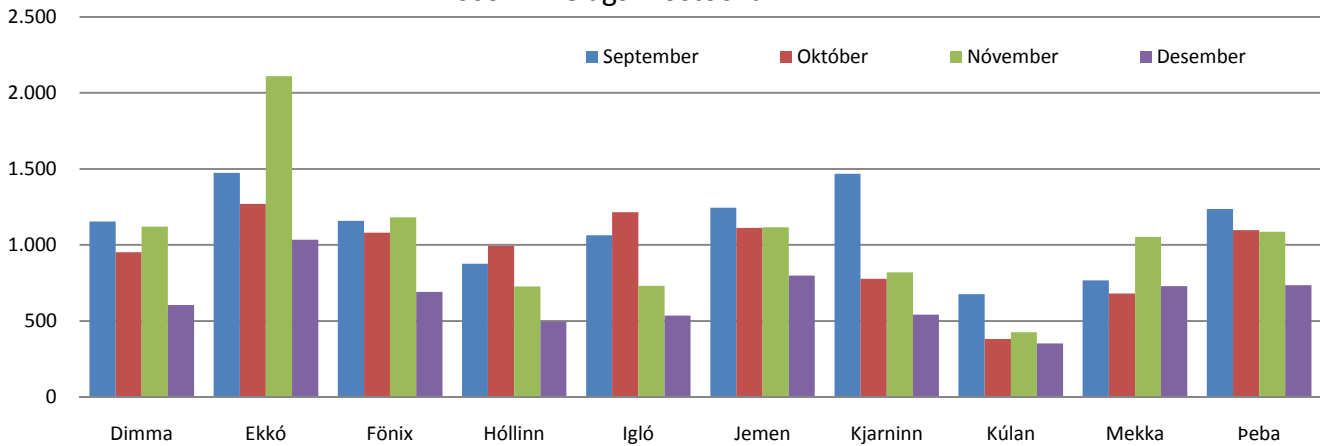
Aðsókn í Sundlaug Kópavogs



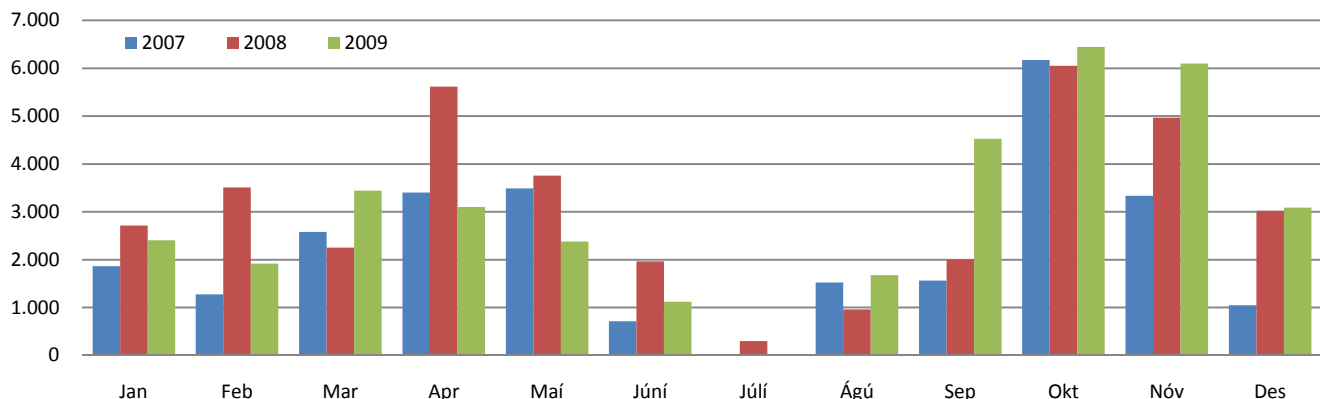
Aðsókn í sundlaugina Versölum



Aðsókn í félagsmiðstöðvar

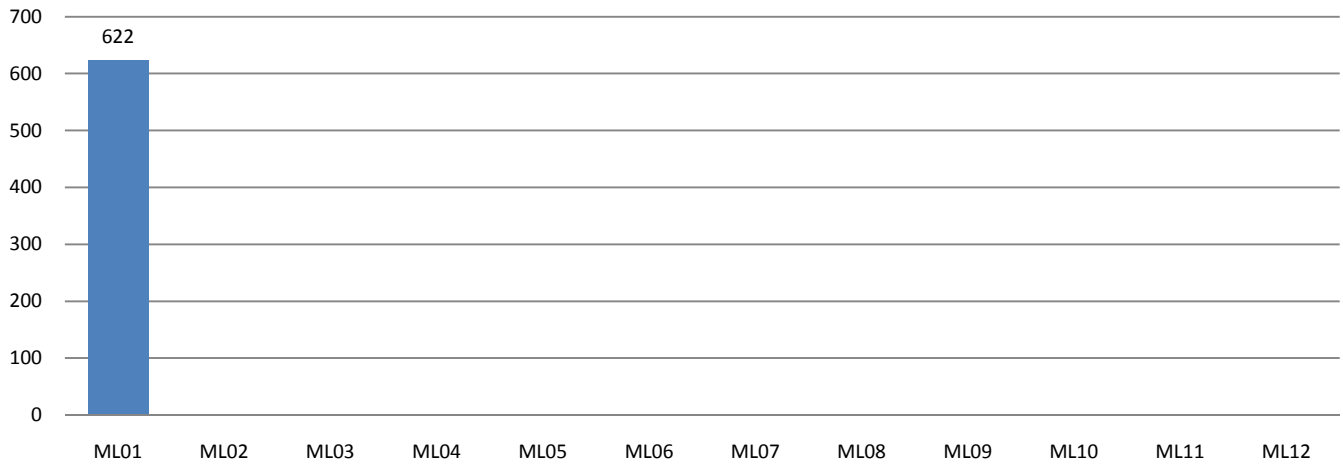


Aðsókn að Salnum

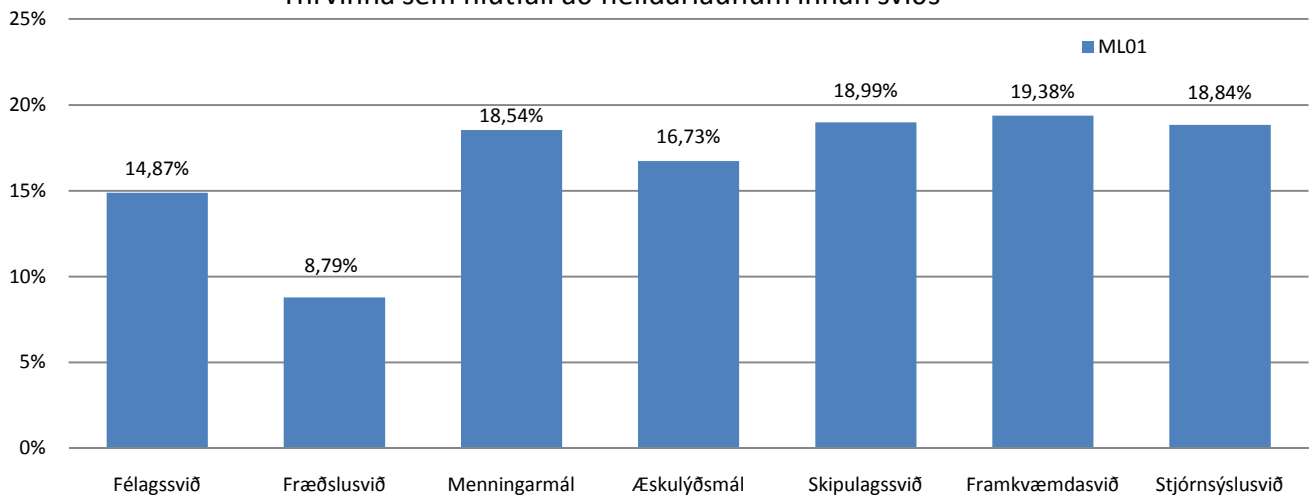


Starfsmannamál

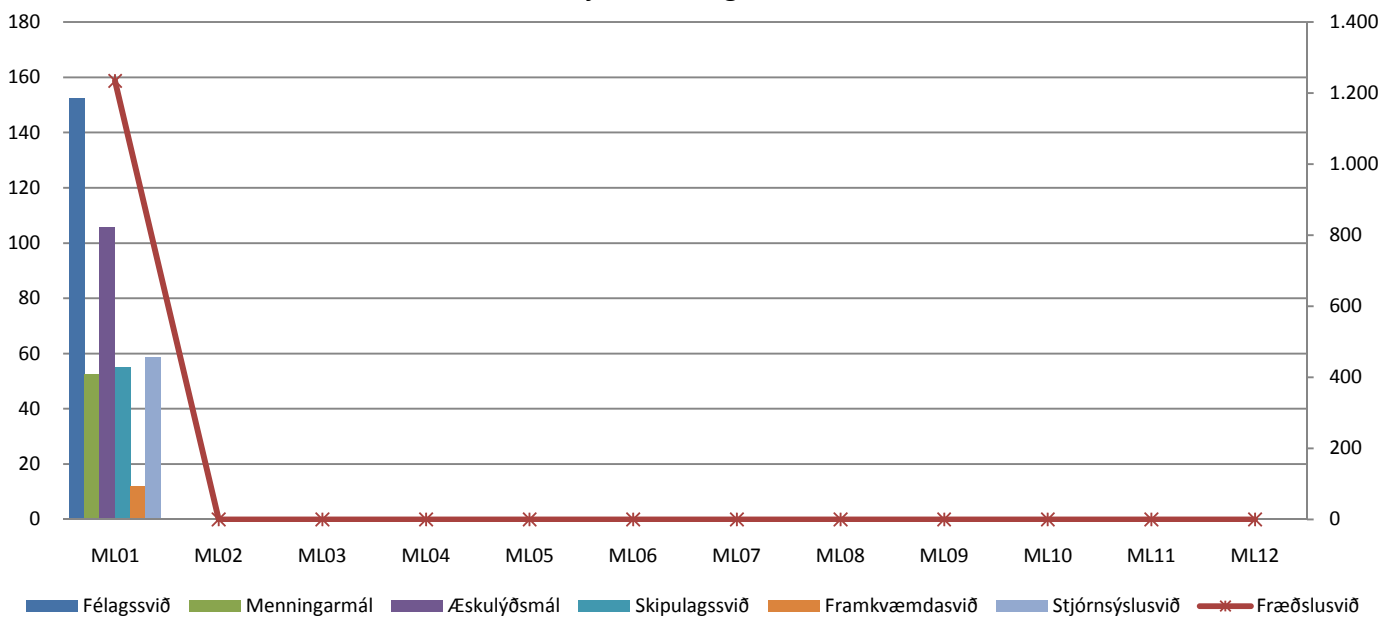
Heildarlaun



Yfirvinna sem hlutfall að heildarlaunum innan sviðs



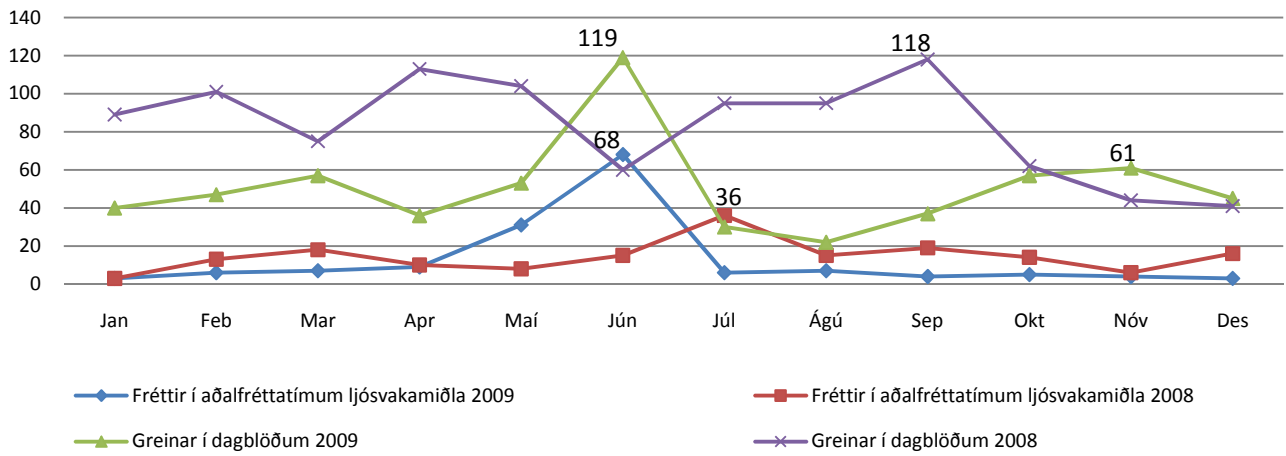
Fjöldi stöðugilda



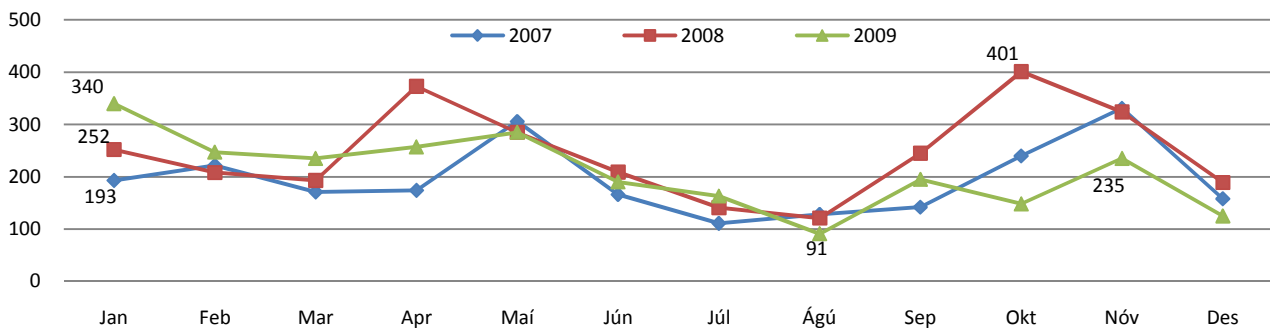
Heildarlaun starfsmanna Kópavogsbæjar eru í milljónum króna. ML02 stendur fyrir útborguð mánaðarlaun 1. febrúar. Tölur eru með launatengdum gjöldum.

Ýmis mál

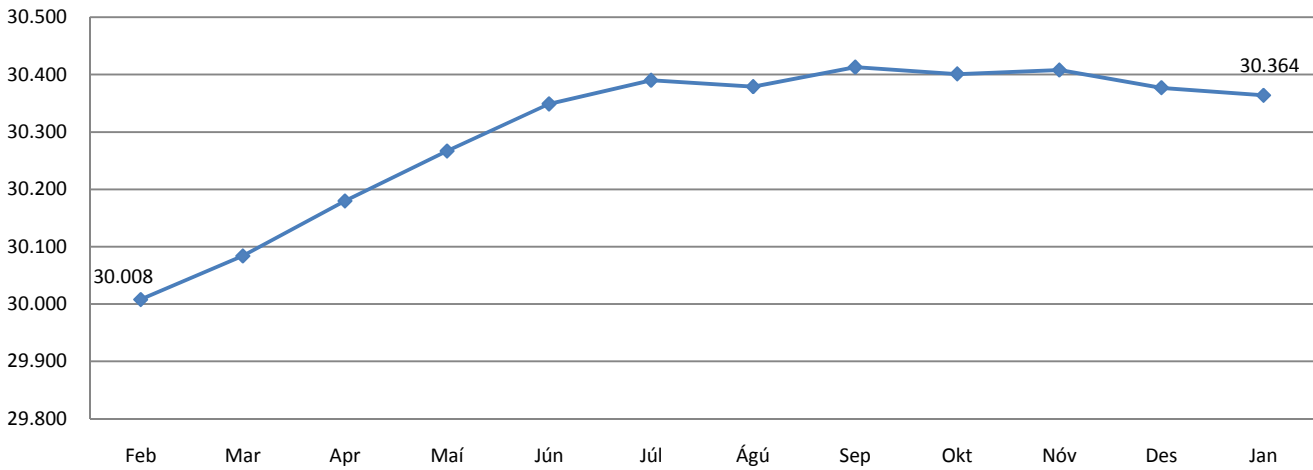
Fjölmiðlavakt



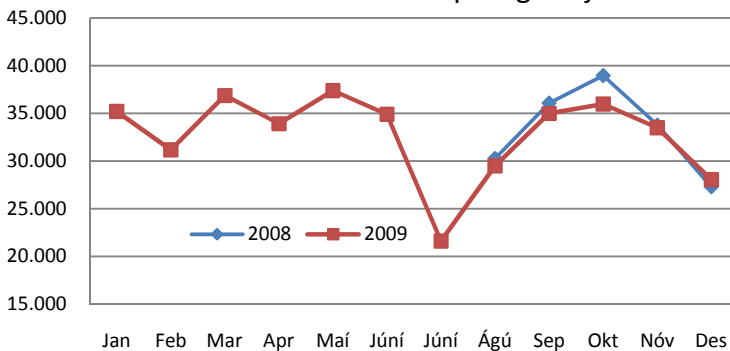
Stofnuð mál eftir mánuðum



Íbúapróun 2009 - 2010



Heimsóknir á vef Kópavogsbæjar



Fjöldi símtala og svörun

