



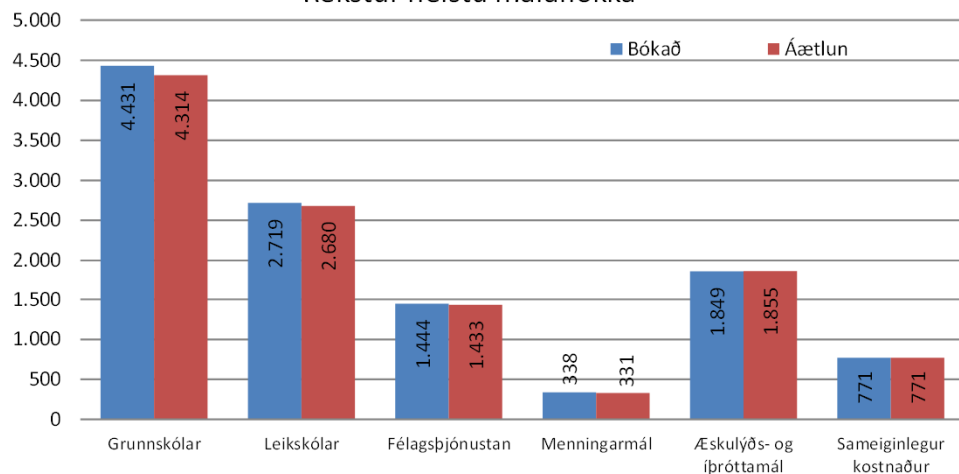
Mánaðarskýrsla Kópavogsbæjar. Útgefin í nóvember 2014. Nær til starfsemi í október 2014.



Fjármál

	Bókað	Áætlun	Mismunur	%
Tekjur	24.020.217.864	23.659.675.290	360.542.574	102
Gjöld án fjármagnsliða	20.061.168.220	20.002.059.057	59.109.163	100
	Bókað	Áætlun		
Grunnskólar	4.431.359.969	4.313.717.475	117.642.494	103
Leikskólar	2.718.675.266	2.679.779.530	38.895.736	101
Félagsþjónustan	1.443.589.535	1.433.210.395	10.379.140	101
Menningarmál	337.586.138	330.723.874	6.862.264	102
Æskulýðs- og íþróttamál	1.849.086.840	1.854.604.011	-5.517.171	100
Sameiginlegur kostnaður	770.748.864	771.295.220	-546.356	100

Rekstur helstu málaflokka

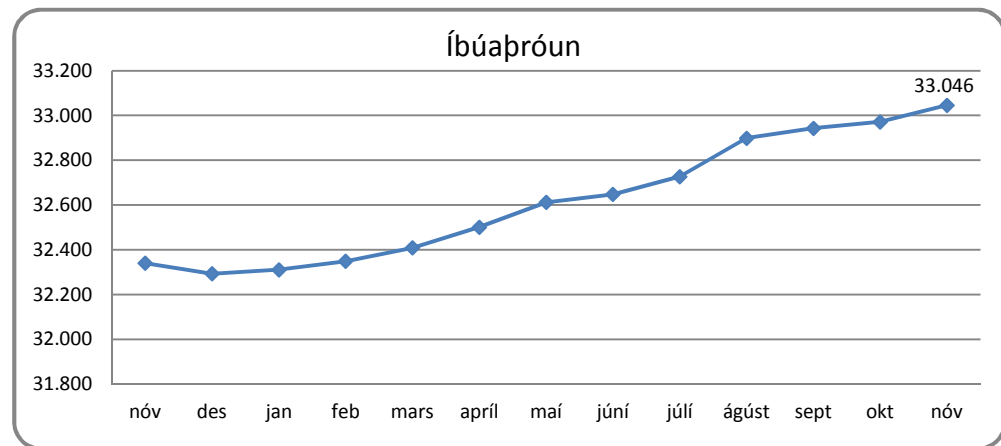
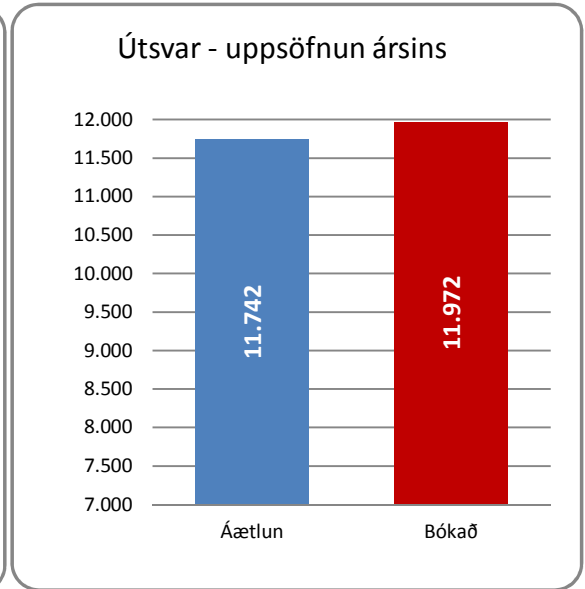
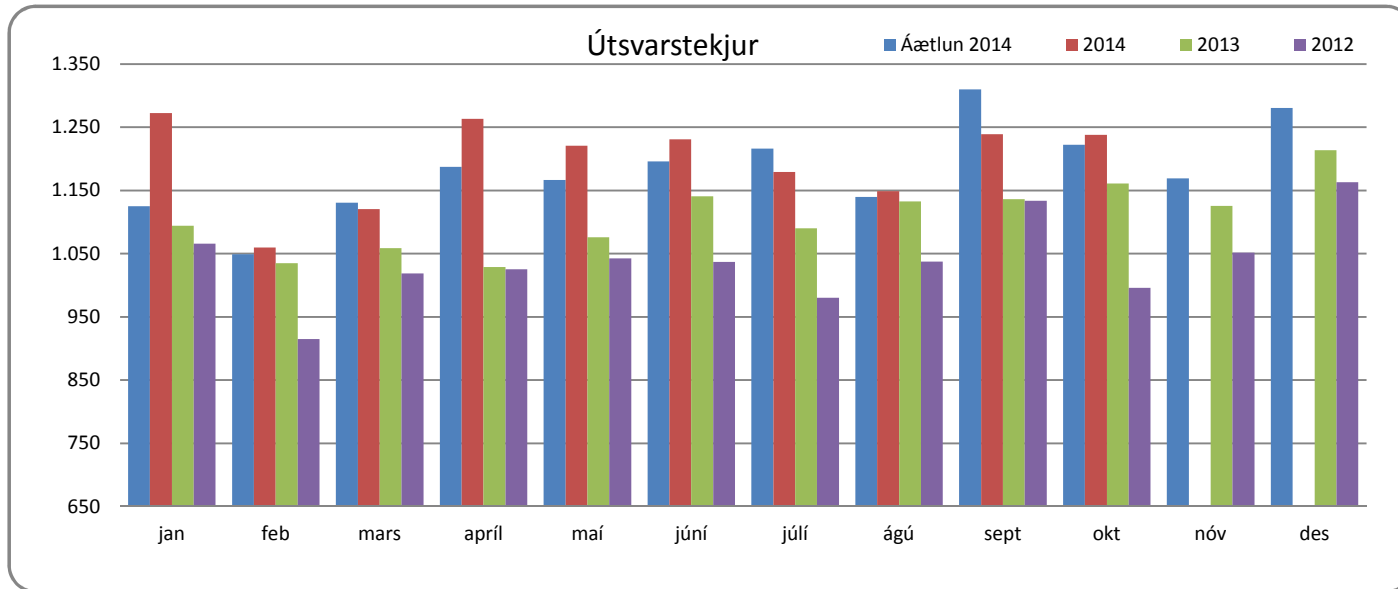


Fréttir

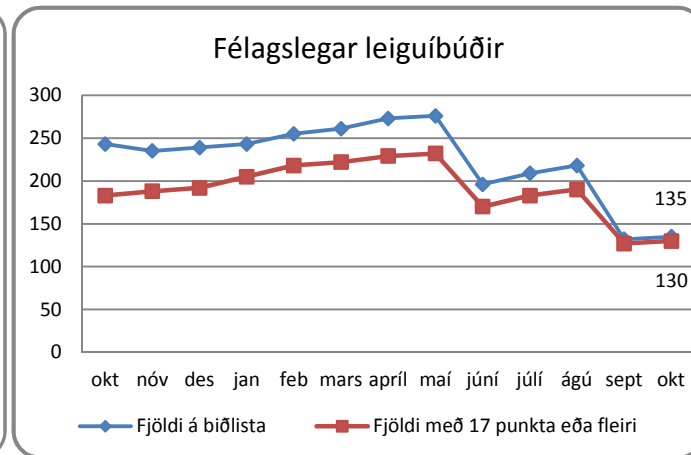
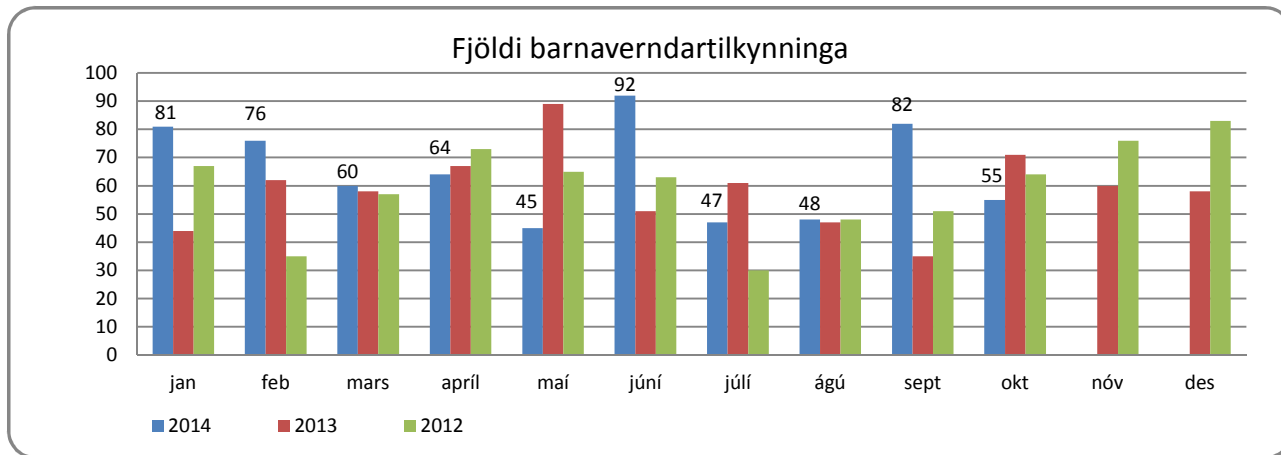
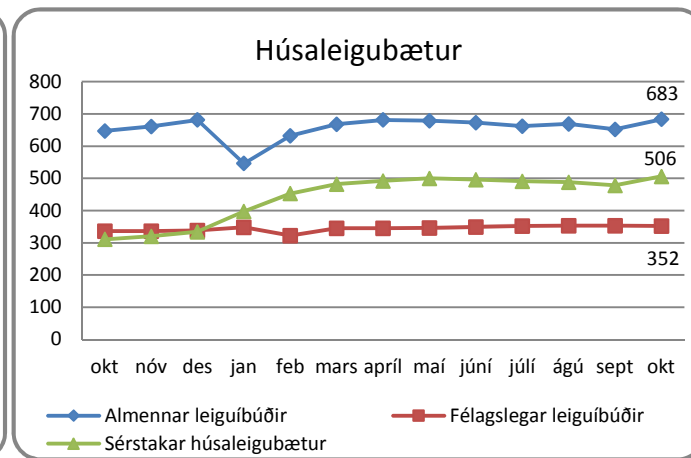
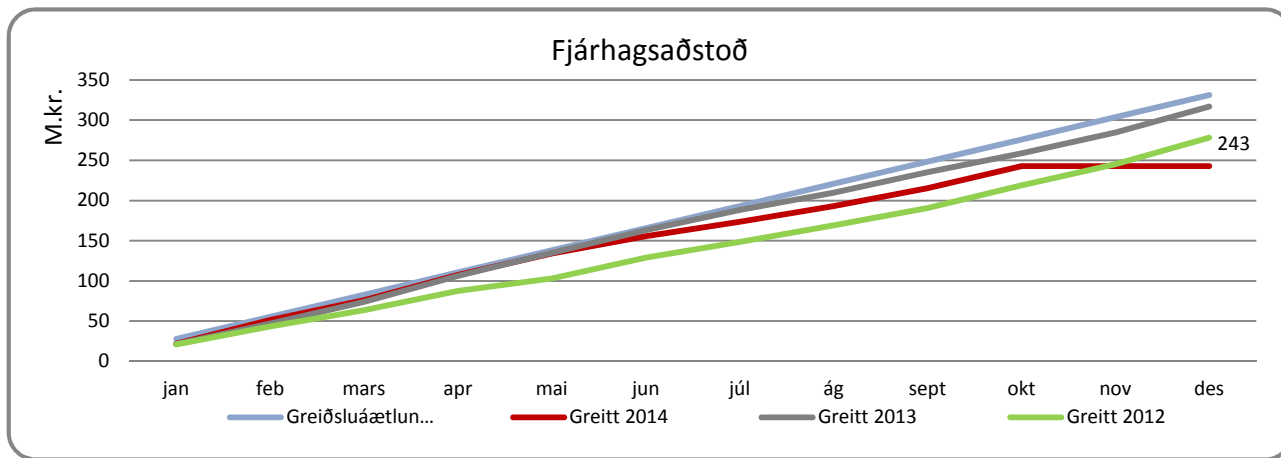
Kvikmyndahátíðin RIFF setti svip sinn á bæjarlífið í Kópavogi fyrsta laugardag októbermánaðar. Stuttmyndir grunnskólanema voru sýndar í Smárabíói og menningarhúsunum í Kópavogi var dagskrá allan daginn. Meðal þess sem boðið var upp á var málþing í Bókasafni Kópavogs, stuttmyndasýning í Molanum og kvikmyndasýning í Héraðsskjalasafninu. 4. október var lokahnykkur á dagskrá í Kópavogi í tengslum við RIFF-kvikmyndahátíðina sem í fyrsta sinn var haldin í samstarfi við bæinn.

Kynnt var ráðning nýs listræns stjórnanda Gerðarsafn, listasafn Kópavogs. Kristín Dagmar Jóhannesdóttir var valin hæfust úr hópi 40 umsækjenda en Kristín hefur fjölbreytta reynslu sýningarstjórn og stjórnun listrænna verkefna auk þess sem hún hefur stýrt fræðslustarfi hjá Listasafni Reykjavíkur og Listasafni Íslands. Kristín tók við listrænni stjórnun safnsins af Guðbjörgu Kristjánsdóttur sem stýrði safninu frá opnun þess, árið 1994, þar til í haust.

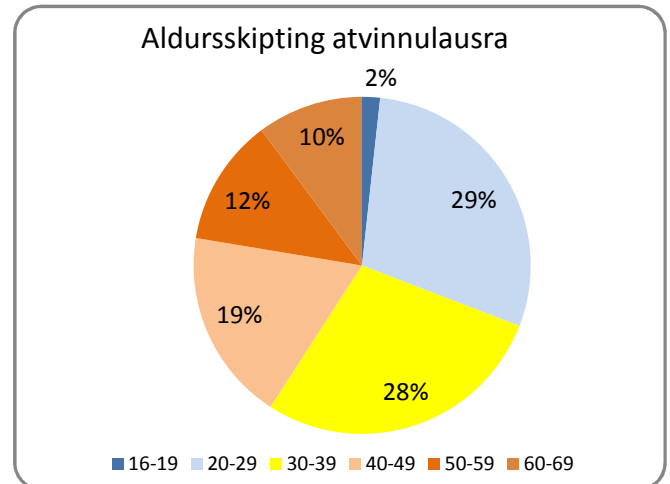
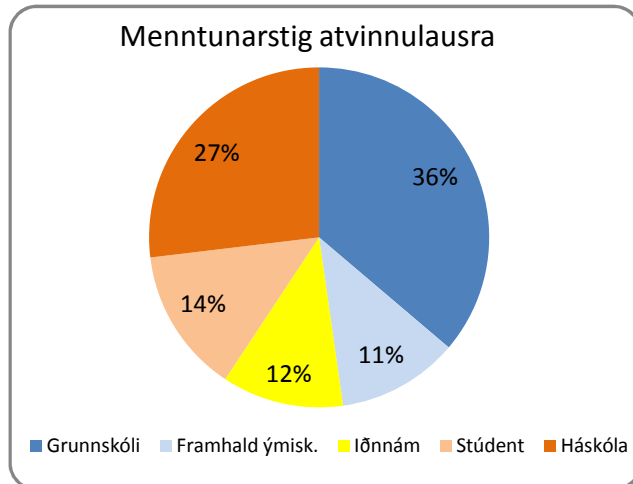
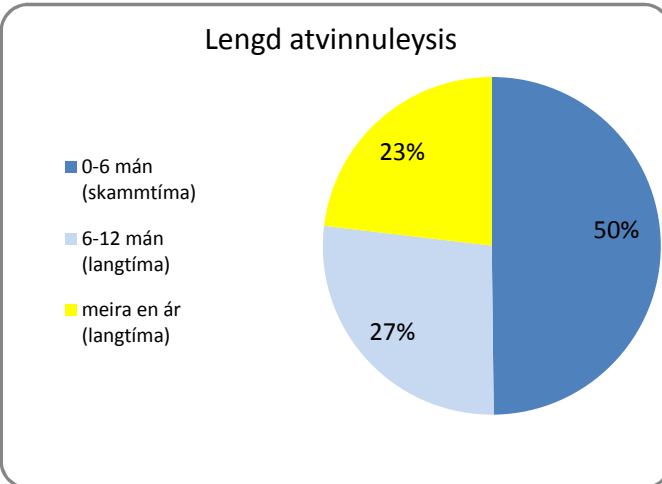
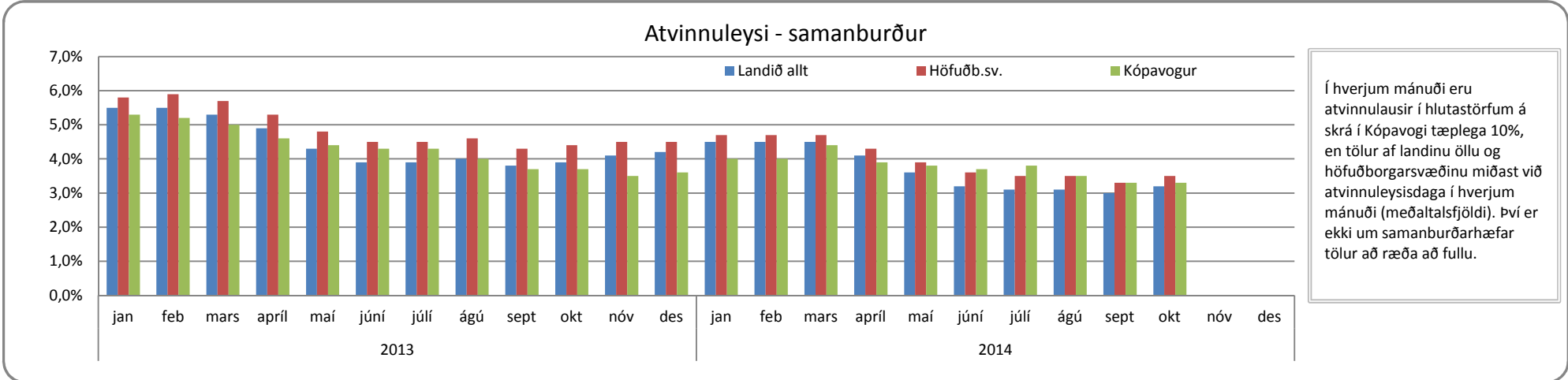
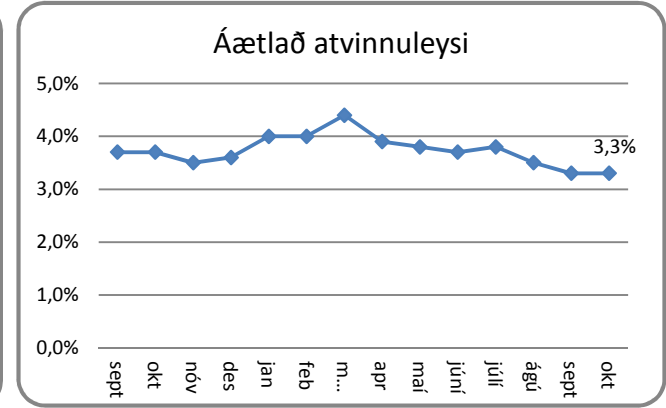
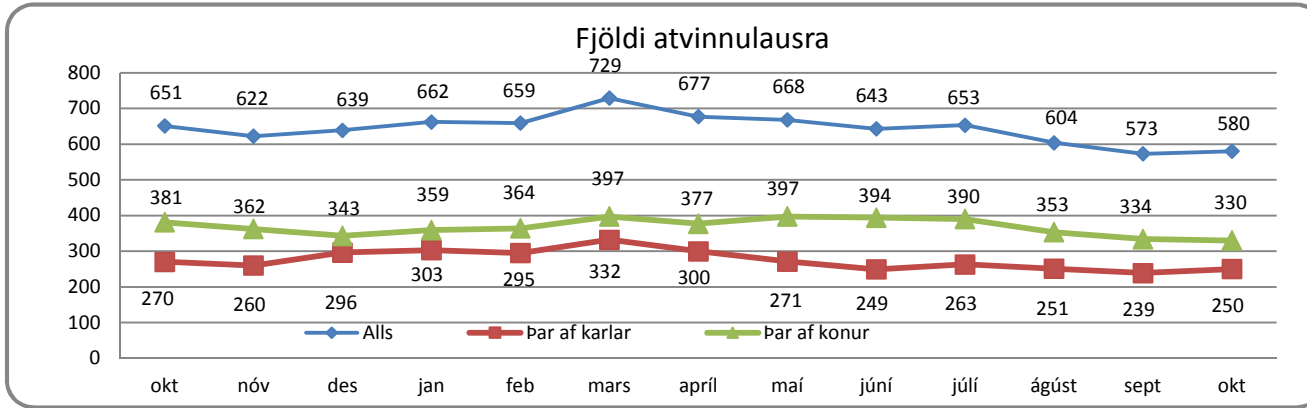
Í október voru upplýsingar um loftgæði í Kópavogi gerðar aðgengilegar á heimasíðu Kópavogsbæ. Leik- og grunnskólar hafa síðan gos hófst í Bárðarbungu spurst mikið fyrir um mengun vegna gossins og var afráðið að gera mælingar í Kópavogi sýnilegri með því að setja upplýsingar á heimasíðu bæjarins sem byggja á gögnum Umhverfisstofnunar.



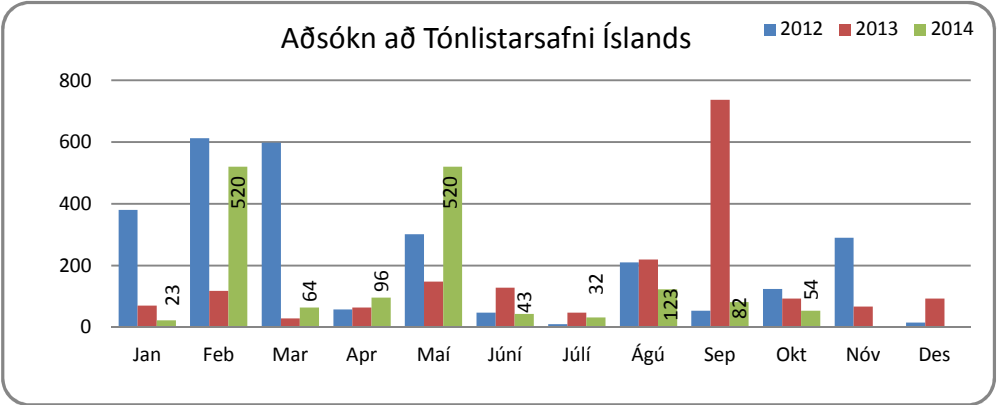
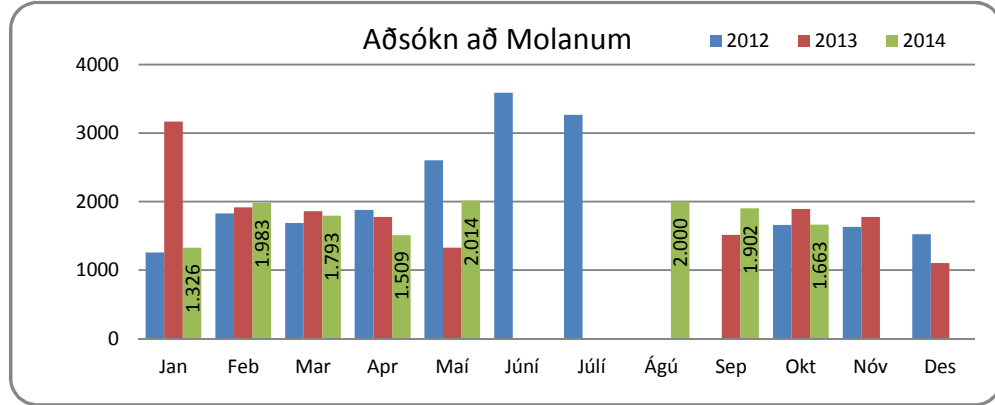
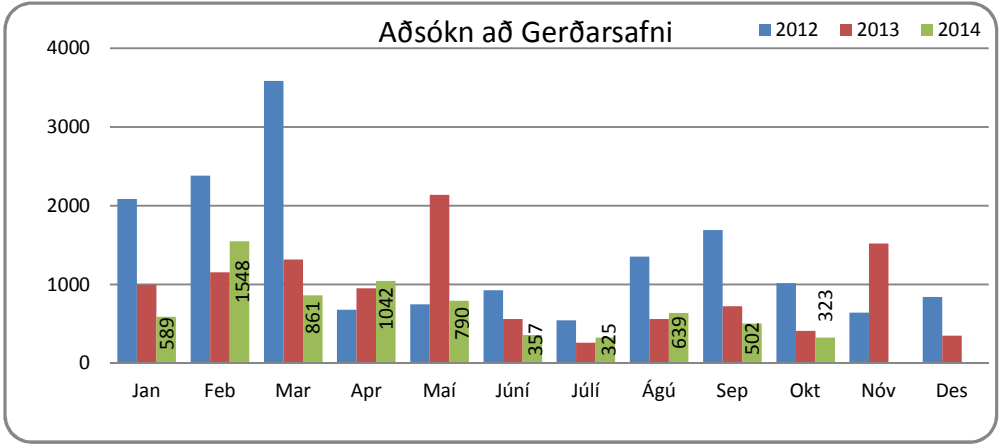
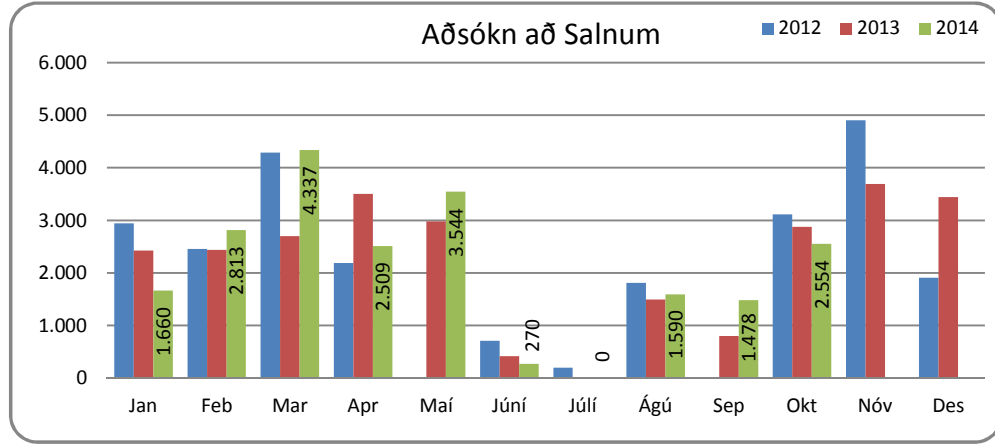
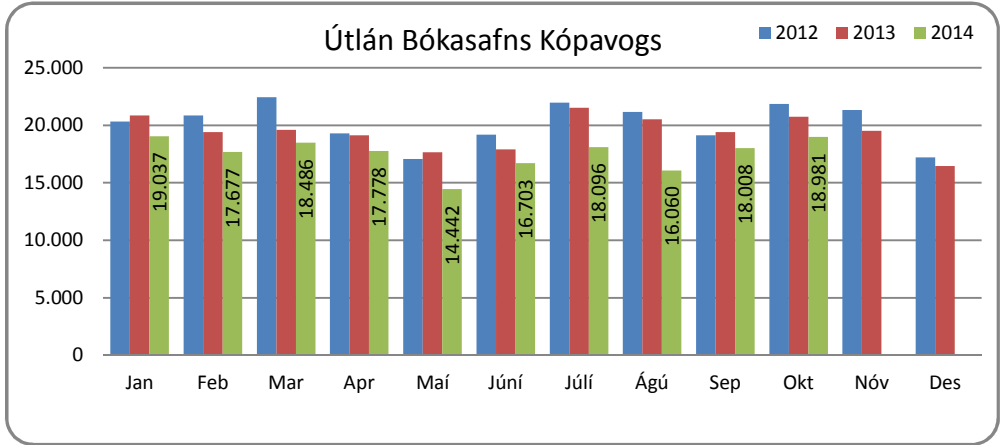
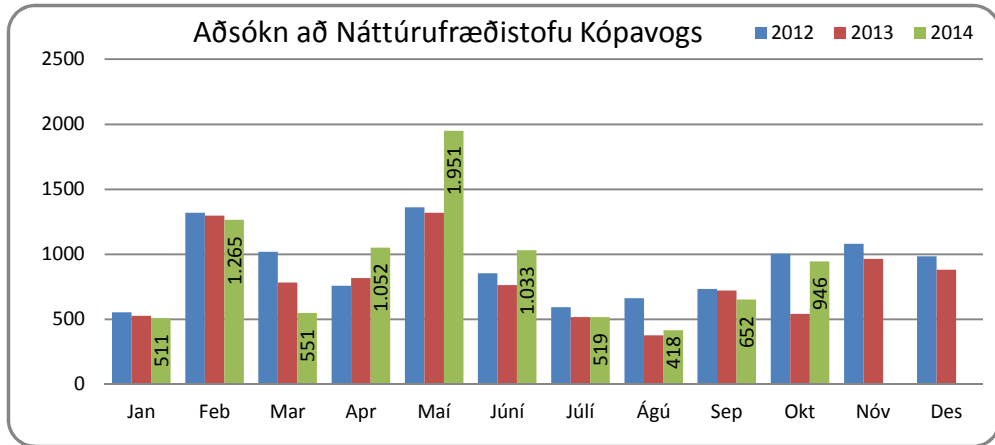
Velferðarmál

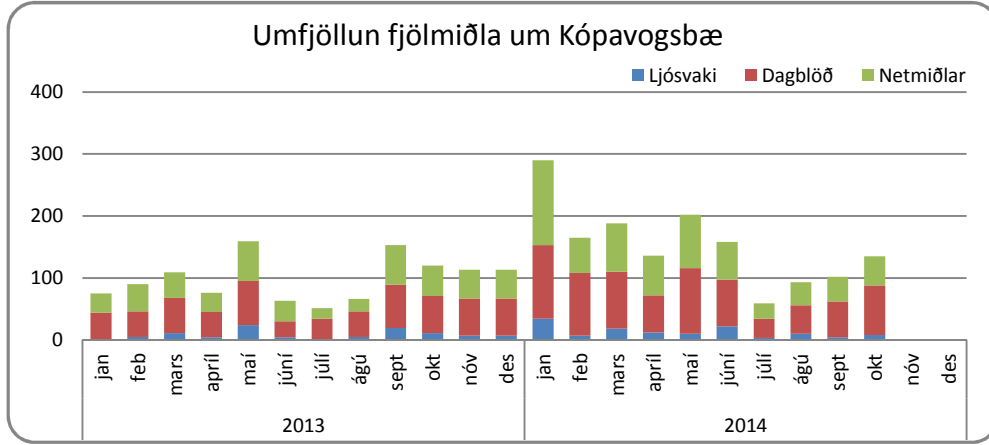
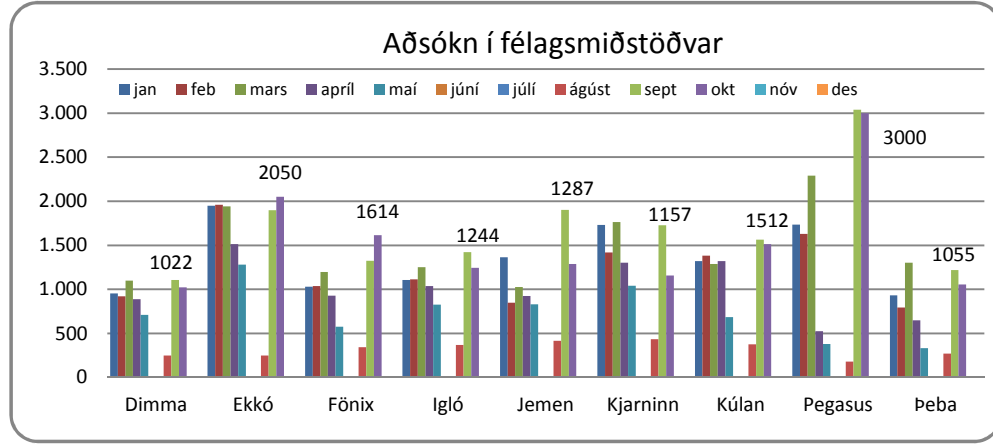
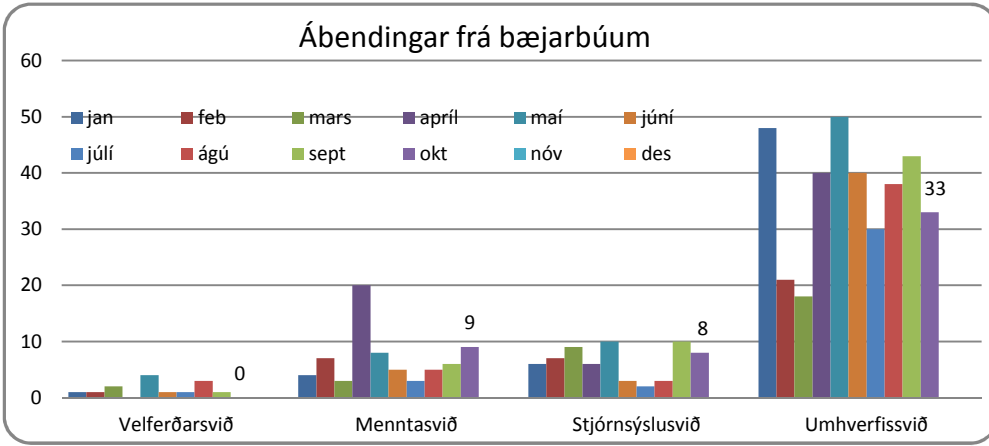
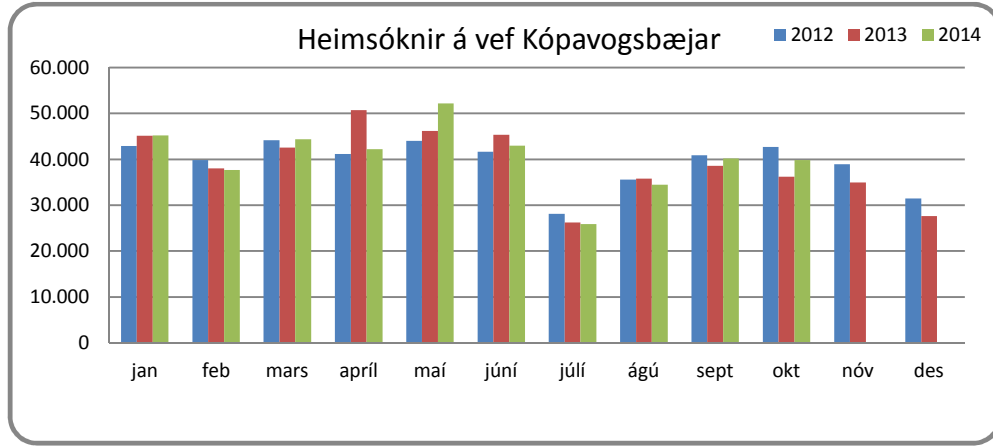
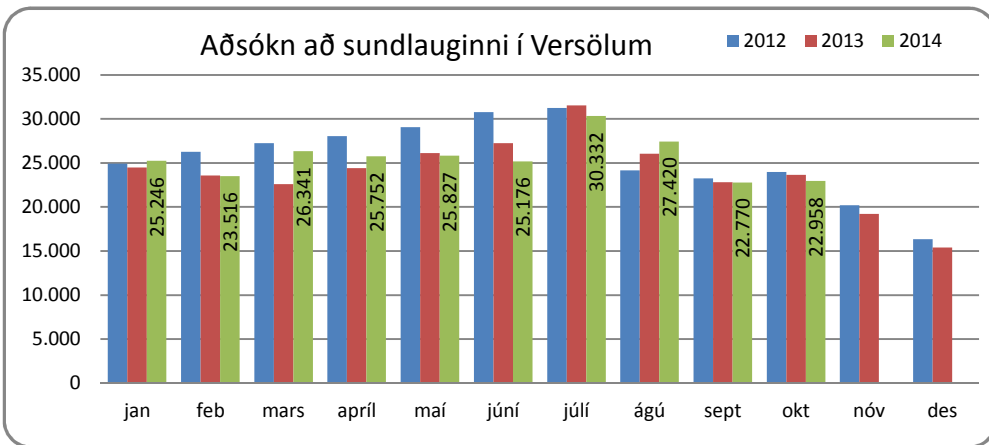
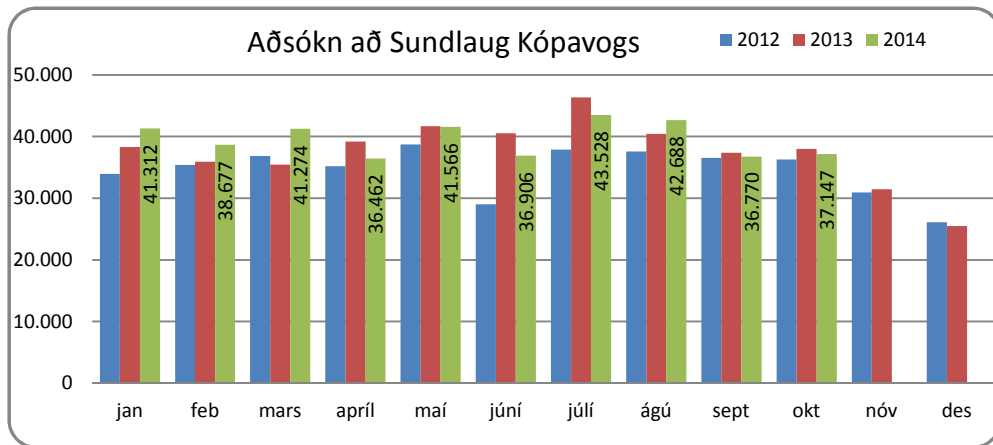


* miðað er við sveitarfélag lögheimilis við skráningu (áður sveitarfélag dvalarstaðar) frá og með nóvember 2013

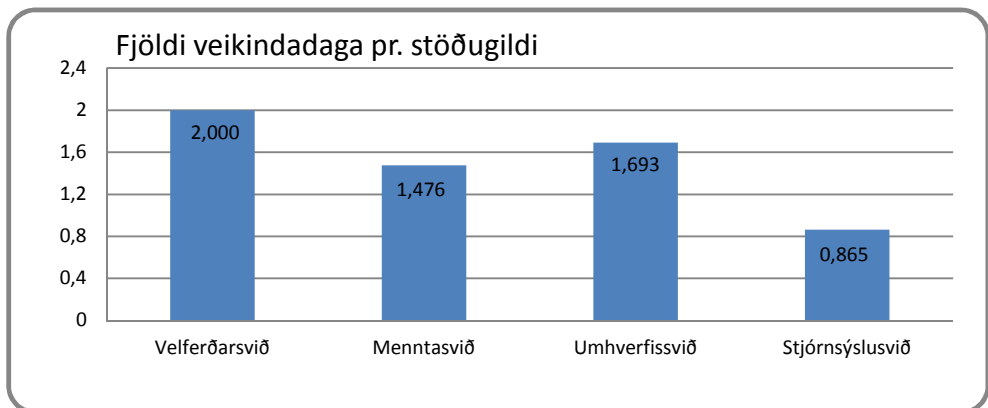
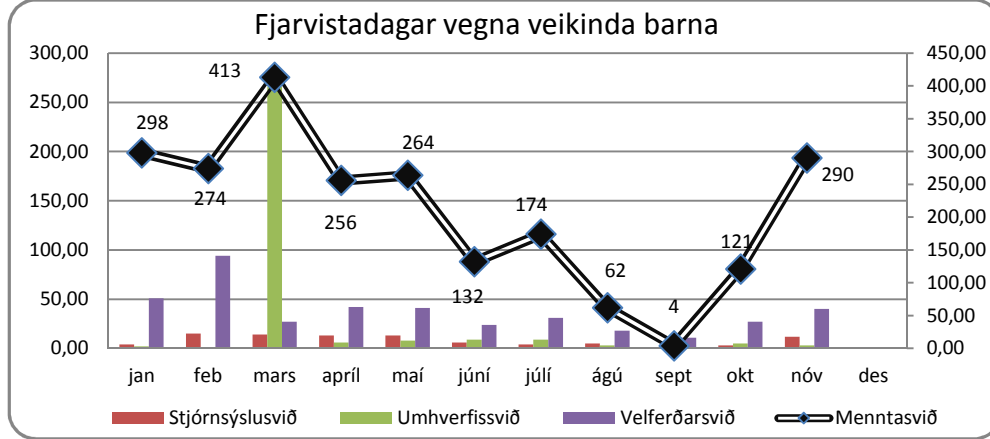
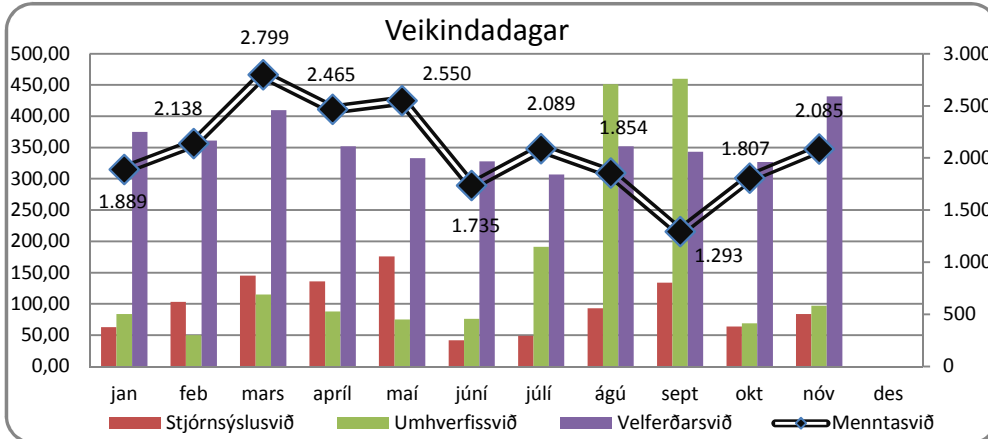
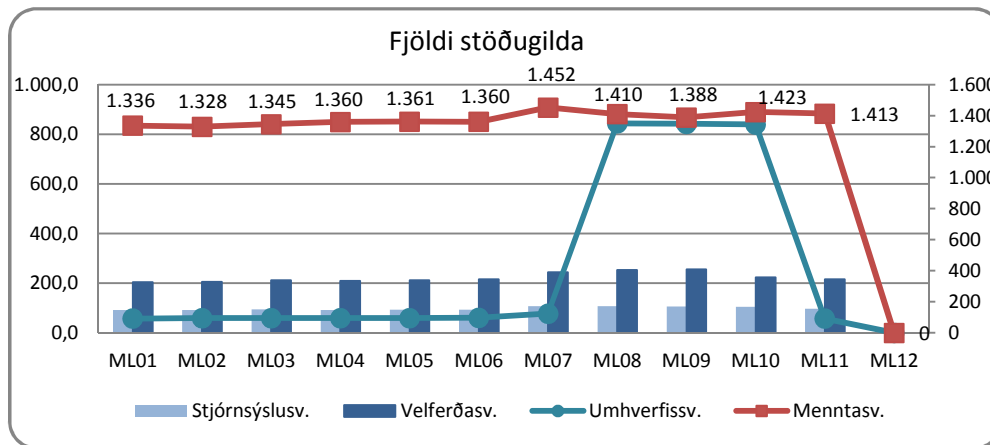
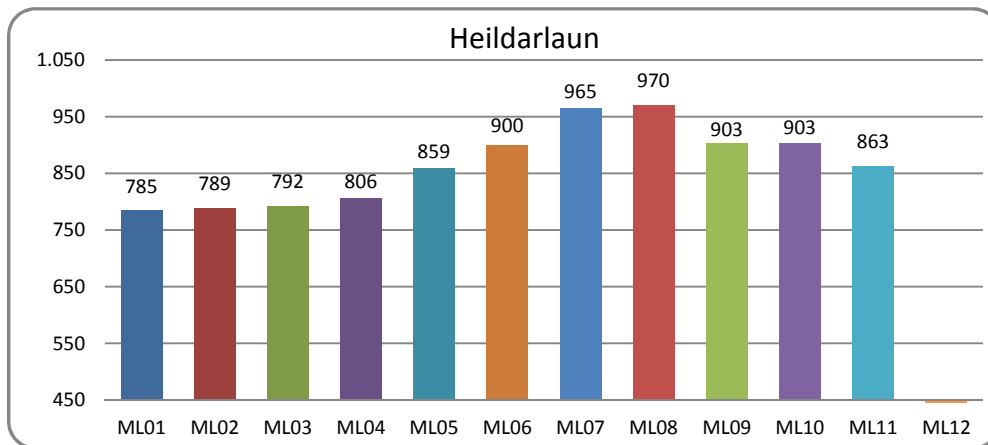


Ýmsar mælingar





Starfsmannamál



Heildarlaun starfsmanna Kópavogsbæjar eru í milljónum króna. ML04 stendur fyrir útborguð mánaðarlaun 1. apríl. Tölur eru með launatengdum gjöldum.