



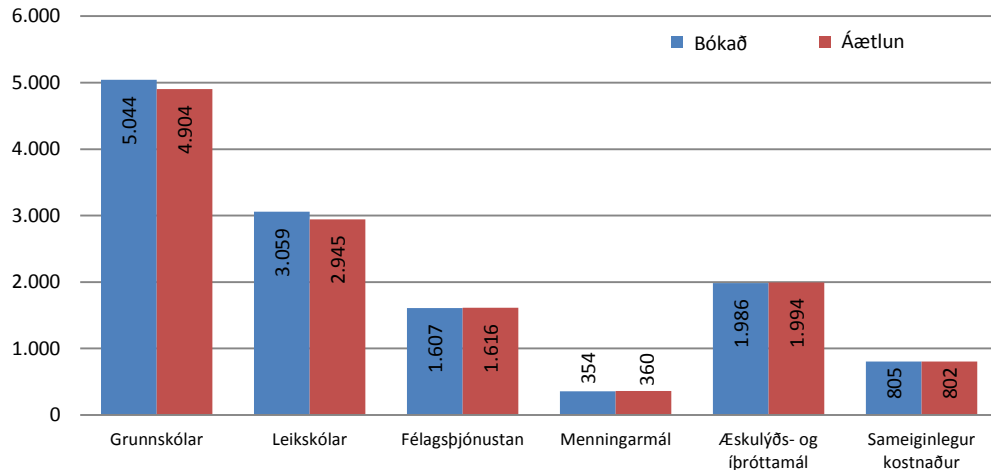
Mánaðarskýrsla Kópavogsbæjar. Útgefin í nóvember 2015.  
Nær til starfsemi í október 2015.



## Fjármál

	Bókað	Áætlun	Mismunur	%
<b>Tekjur</b>	25.411.506.731	25.520.082.443	-108.575.712	100
<b>Gjöld án fjármagnsliða</b>	22.035.405.548	21.820.640.748	214.764.800	101
<b>Grunnskólar</b>	5.043.800.588	4.903.876.863	139.923.725	103
<b>Leikskólar</b>	3.058.700.688	2.945.351.830	113.348.858	104
<b>Félagsþjónustan</b>	1.607.228.097	1.615.849.325	-8.621.228	99
<b>Menningarmál</b>	354.025.272	360.056.938	-6.031.666	98
<b>Æskulýðs- og íþróttamál</b>	1.985.992.431	1.993.574.088	-7.581.657	100
<b>Sameiginlegur kostnaður</b>	805.431.557	801.695.063	3.736.494	100

Rekstur helstu málaflokka



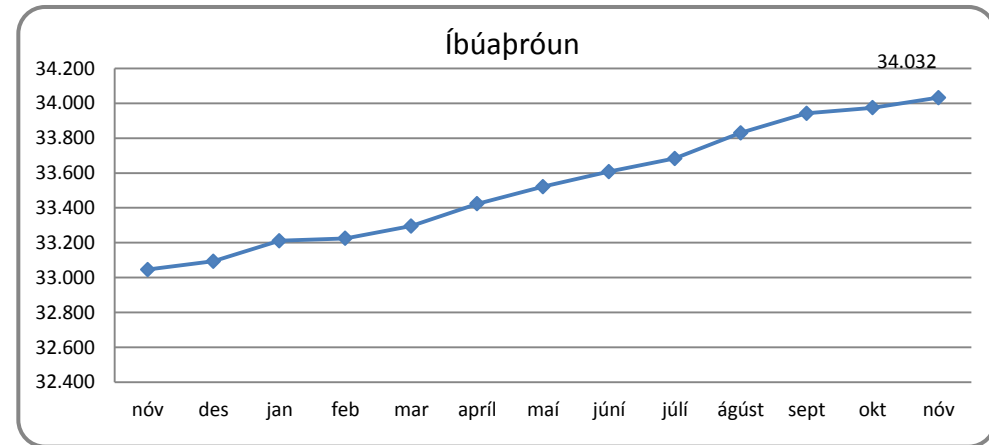
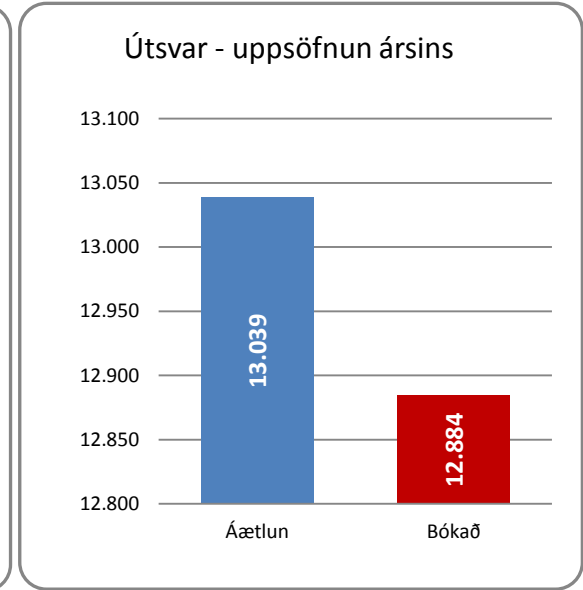
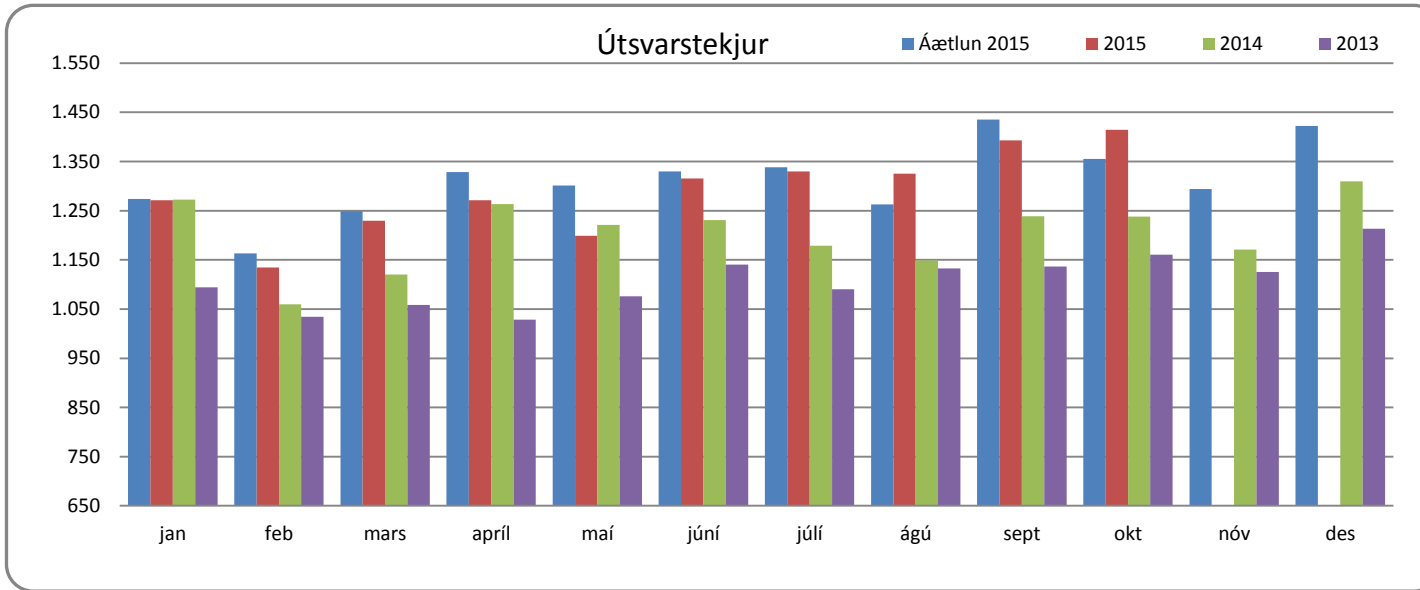
## Fréttir

Stefnumarkandi tillögur þverpólitísks starfshóps í húsnæðismálum í Kópavogi voru kynntar. Starfshópnum var falið að greina stöðu á húsnæðismarkaði og vann í framhaldi tillögur að nýjum leiðum í húsnæðismálum. Hópurinn leggur meðal annars til að Kópavogsbær beiti sér fyrir byggingu á litlum og ódýrum íbúðum, bjóði upp á íbúðir til leigu með kauprétti og leigjendum í félagslega kerfinu standi til boða að kaupa húsnæði sem þeim hefur verið úthlutað.

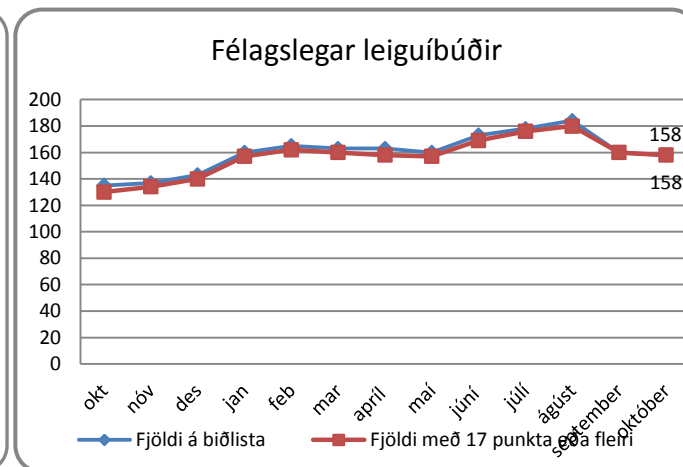
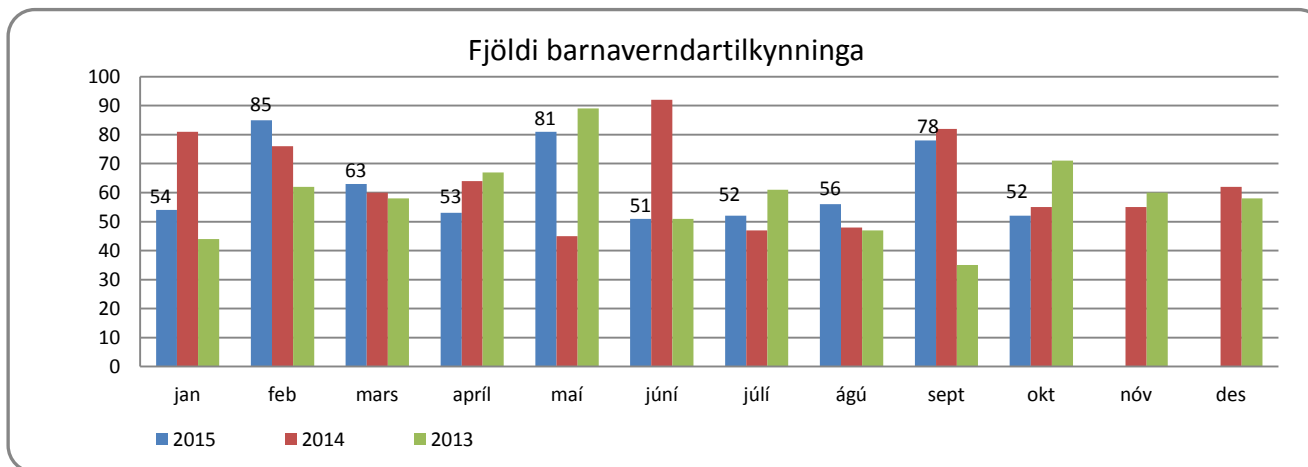
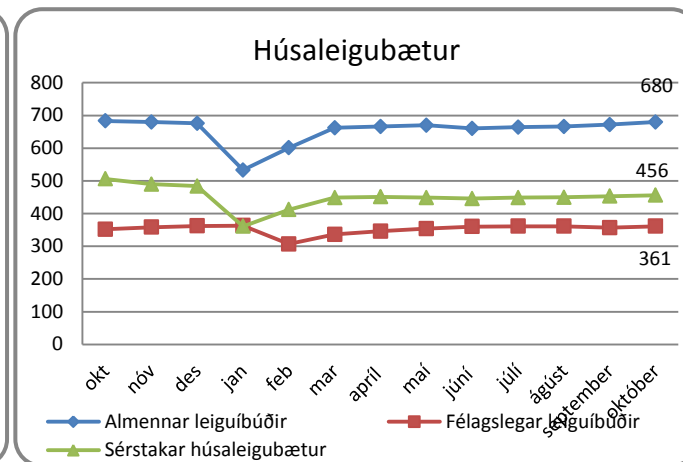
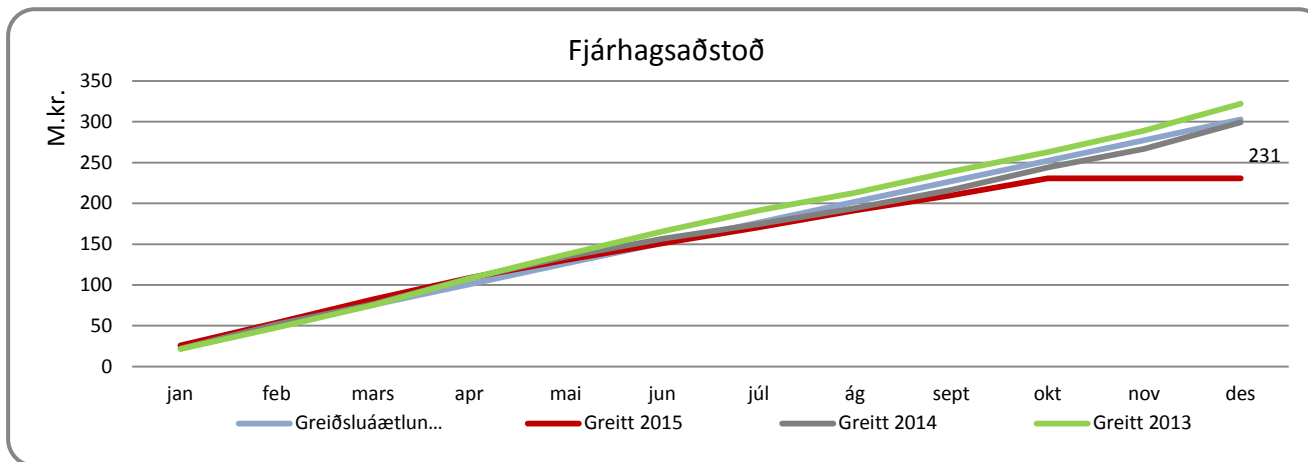
Sameiginleg kynning á fræðslustarfi menningarhúsa Kópavogs, Garðabæjar, Hafnarfjarðar og Mosfellsbæjar var haldin í fyrsta sinn. Á kynningunni gafst starfsfólki leikskóla, grunnskóla og frístundamiðstöðva sveitarfélaganna færi á að kynna sér þá fræðslu og viðburði sem í boði eru í vetur.

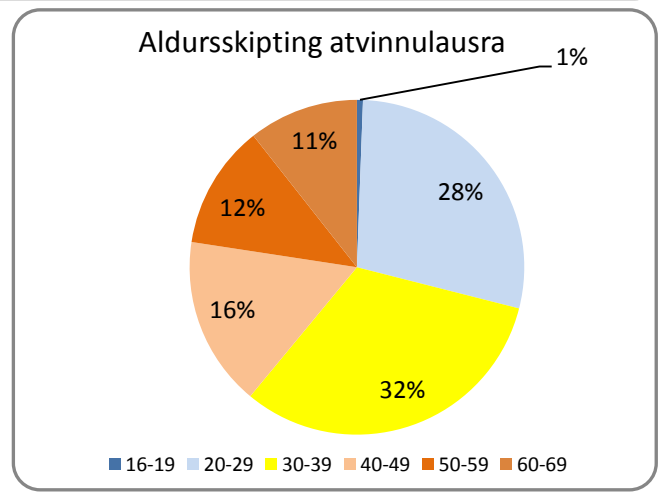
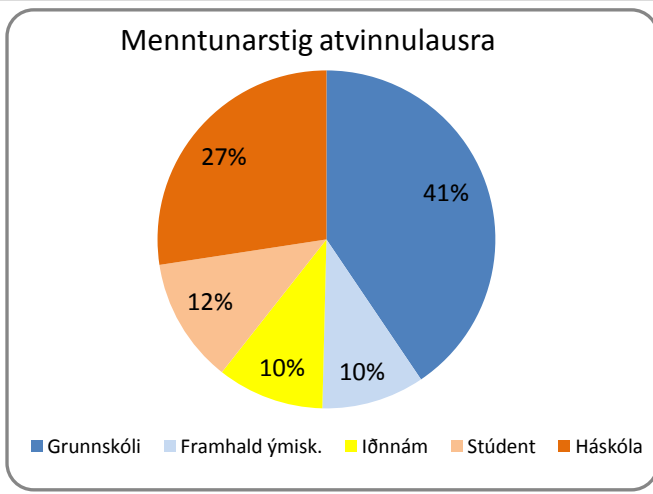
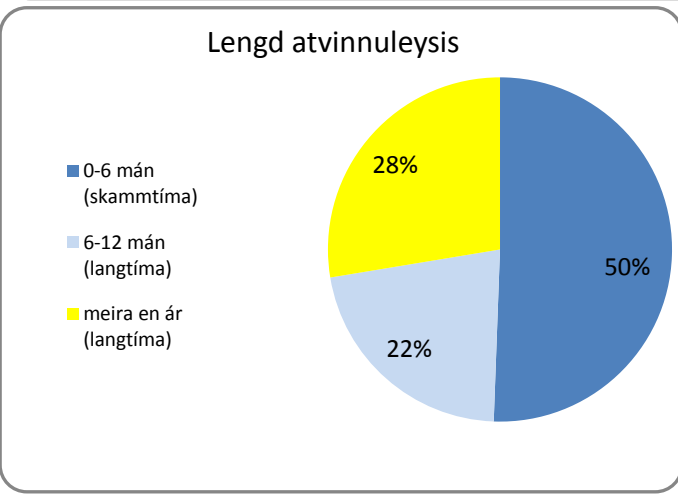
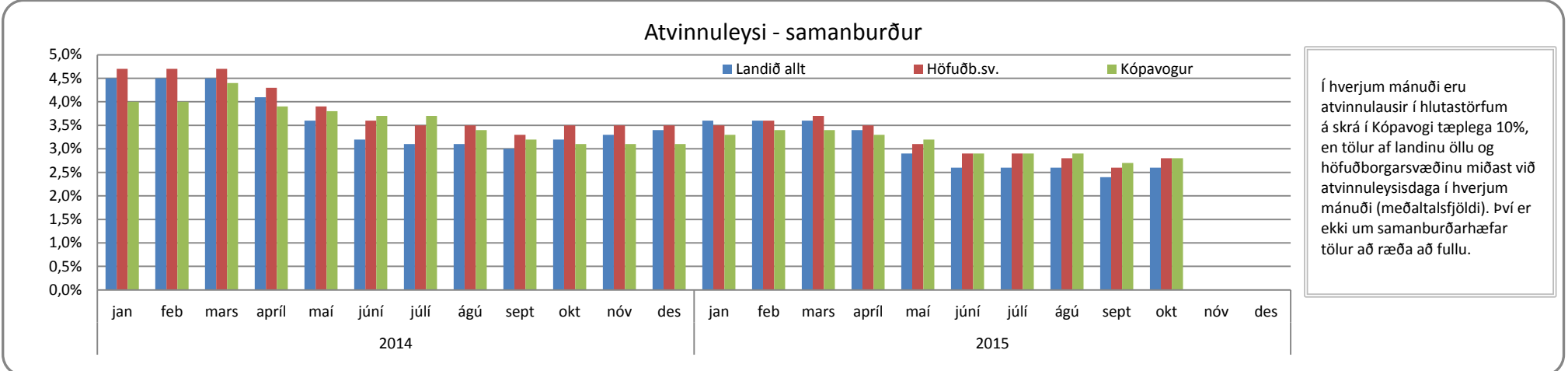
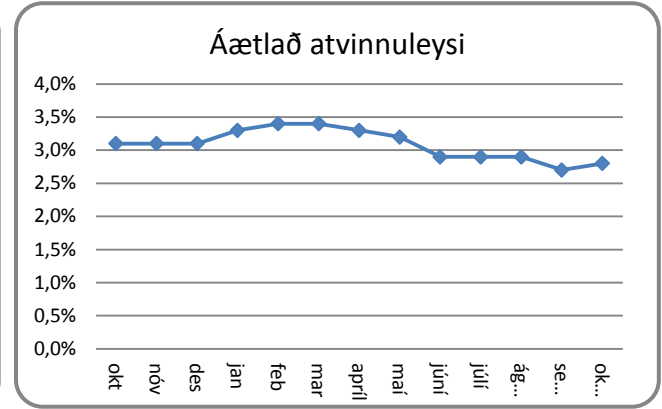
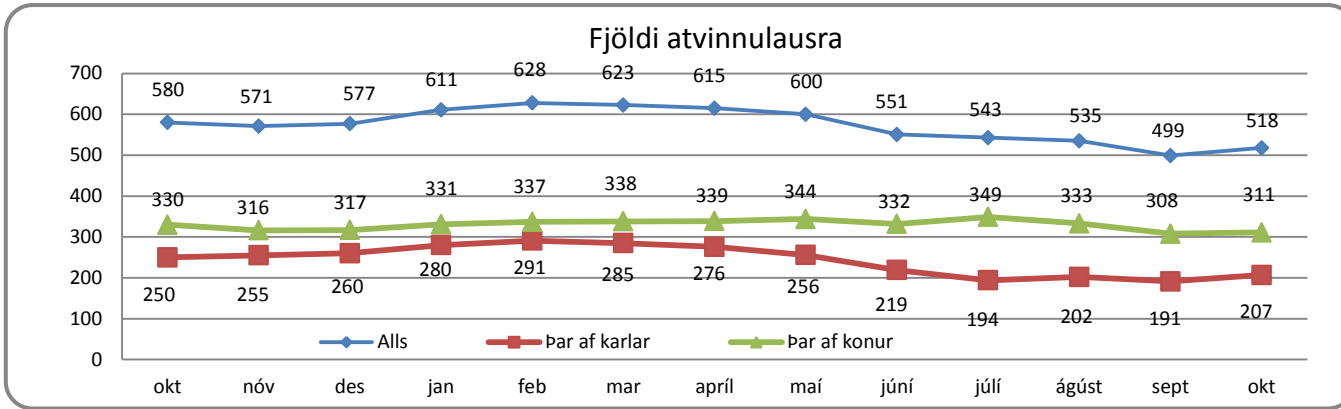
Alþjóðlegri samkeppni, Nordic Built Cities Challenge, um áskoranir á sex þéttbýlissvæðum á Norðurlöndum var hleypt af stokkunum. Kársnes í Kópavogi er eitt af svæðunum sem valin voru til þátttöku í keppninni. Þar er viðfangsefnið að bæta tengingar milli þróunarsvæðisins og annarra hluta höfuðborgarsvæðisins og auka þannig sjálfbærni byggðarinnar.

Fjárhagsáætlun Kópavogsbæjar fyrir árið 2016 var lögð fram til fyrri umræðu í bærarstjórn Kópavogs. Áætlunin var unnin í samvinnu allra flokk. Skuldahlutafall bæjarins lækkar umtalsvert á næsta ári og hraðar en aðlögunaráætlun gerði ráð fyrir, það verður komið niður í 156,1% í árslok 2016.

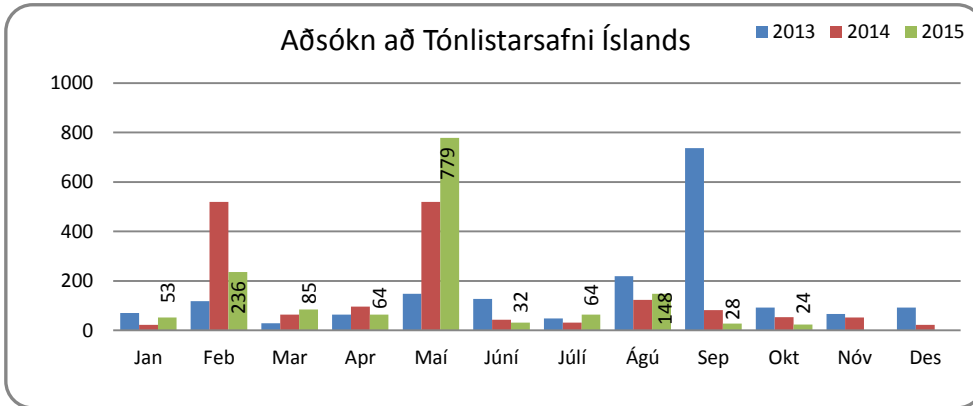
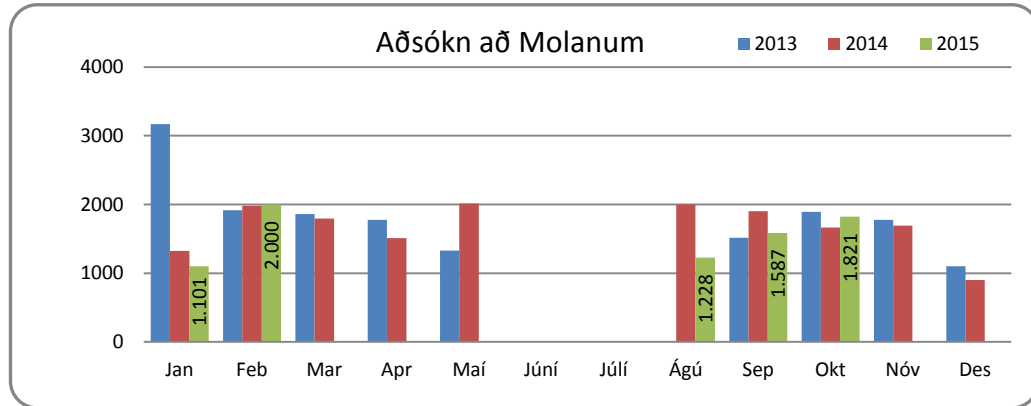
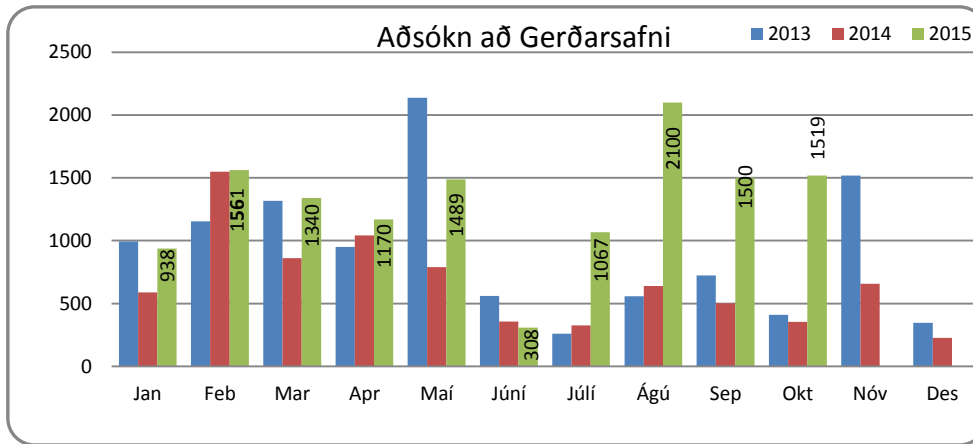
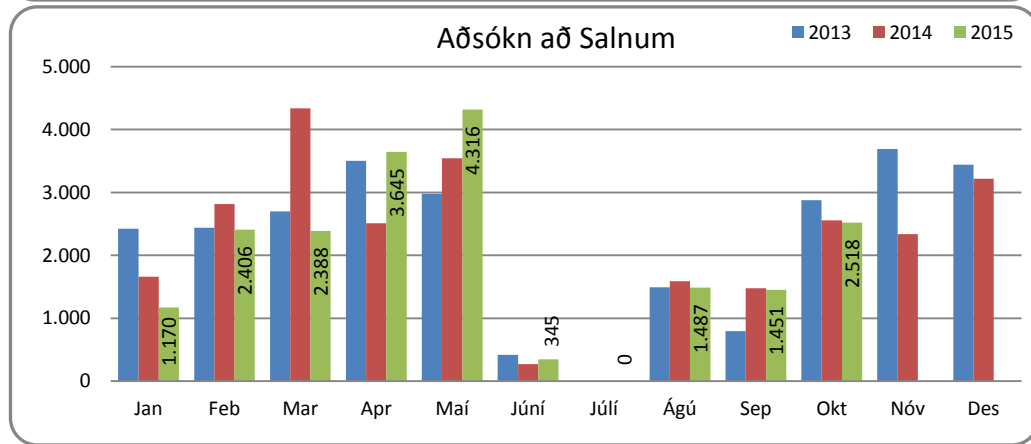
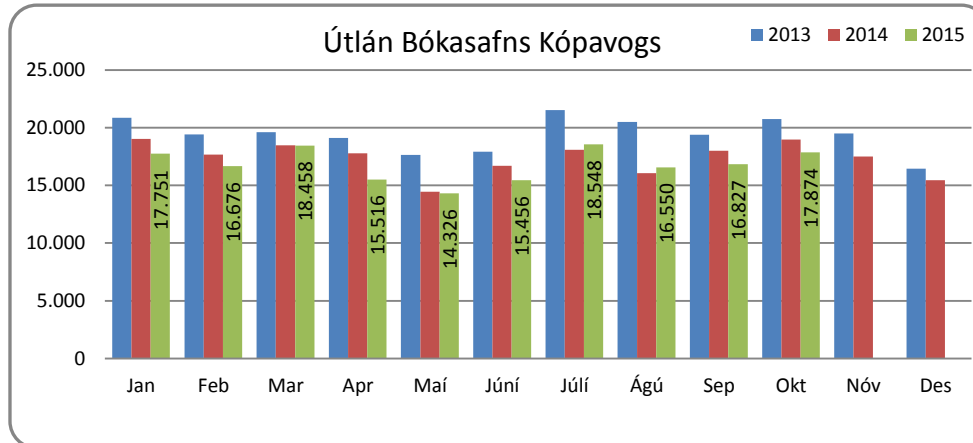
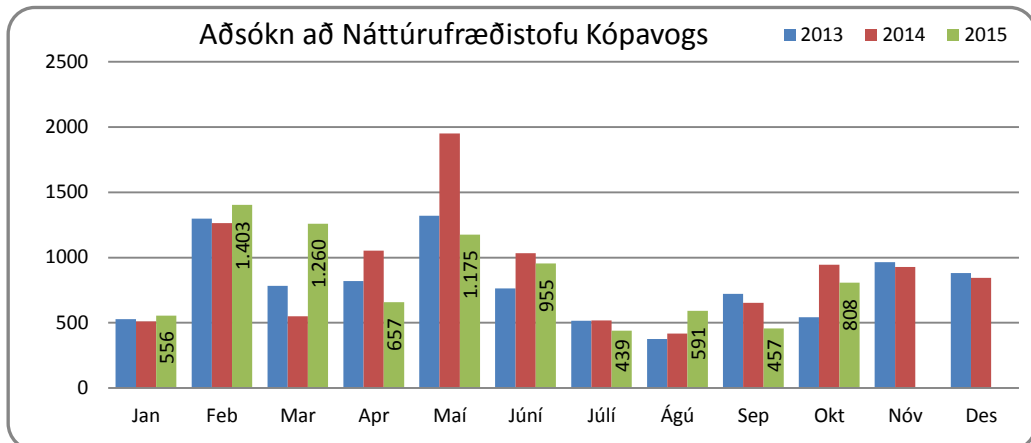


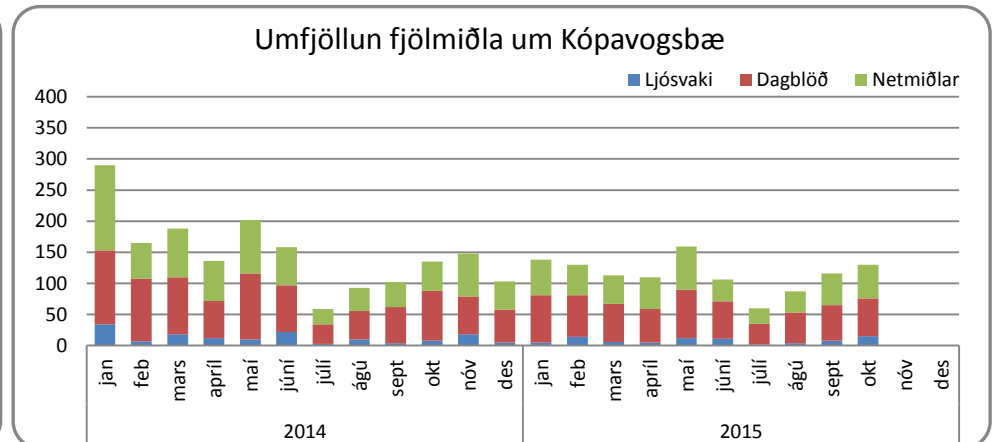
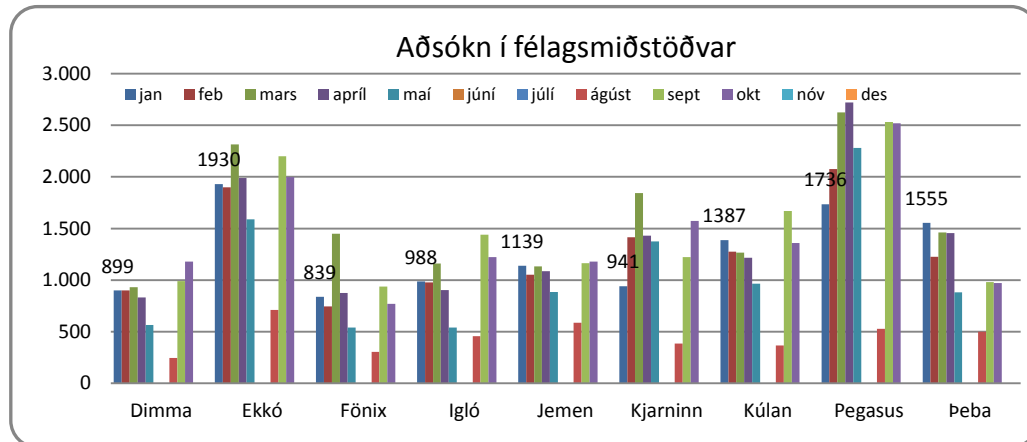
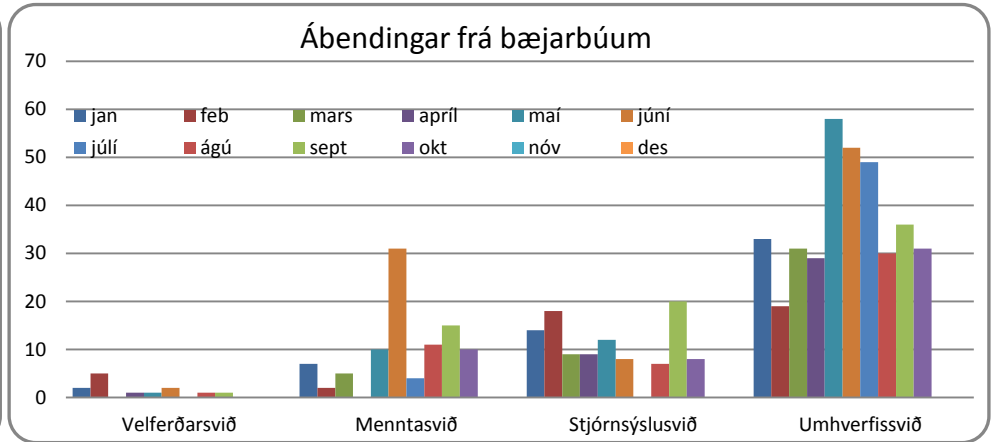
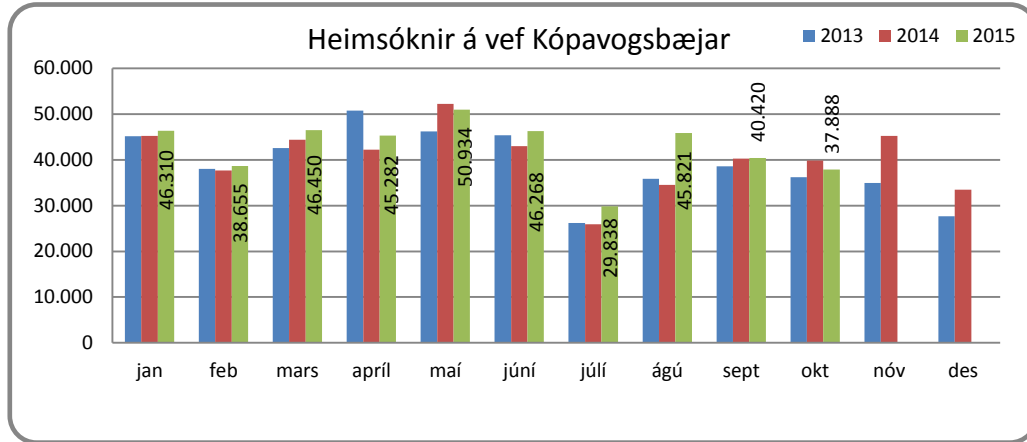
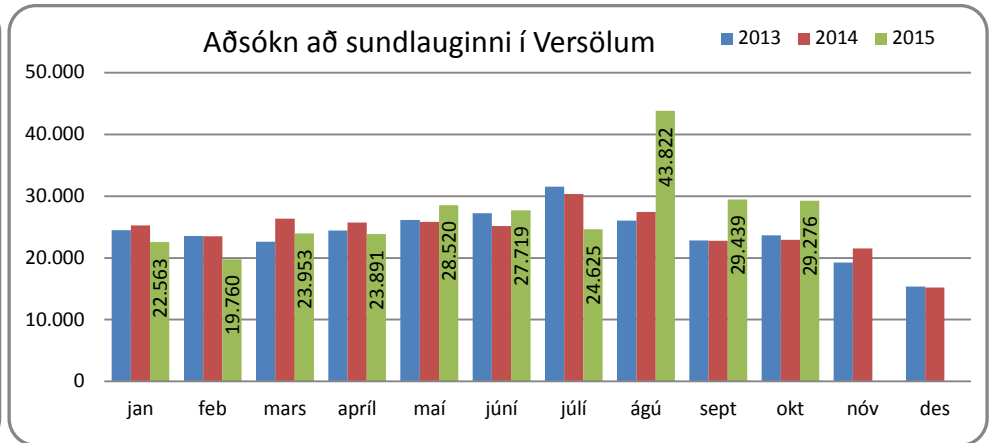
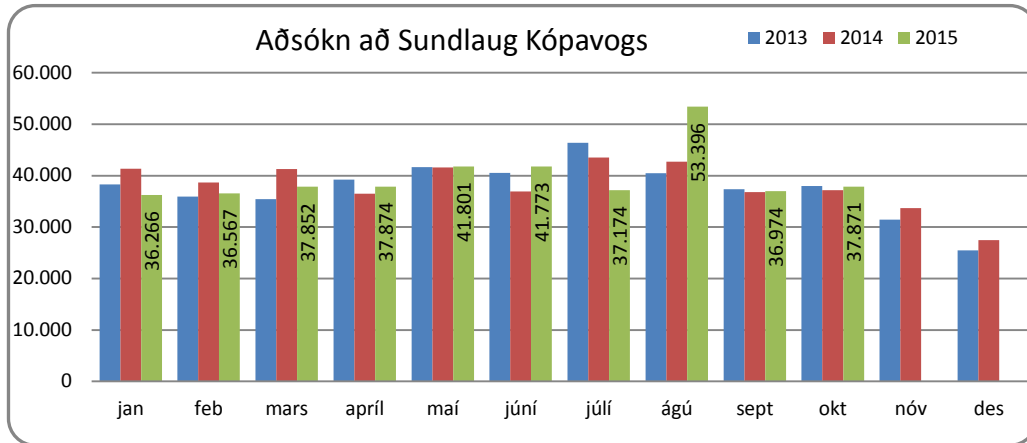
Velferðarmál



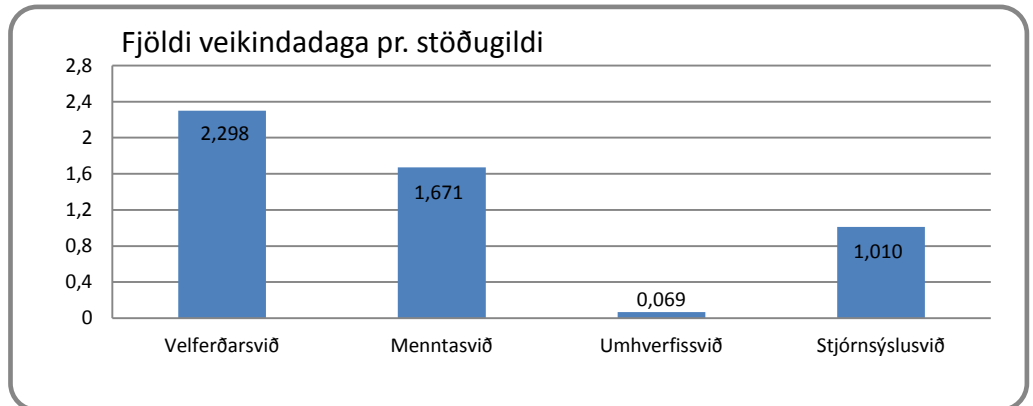
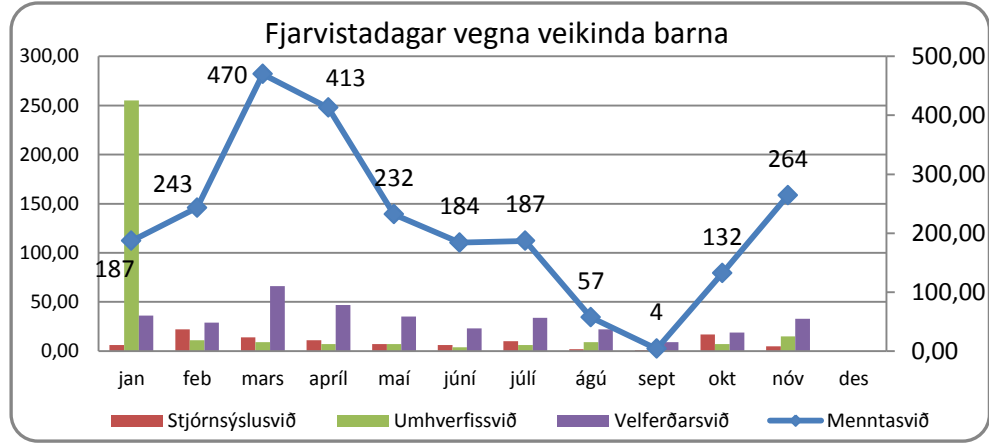
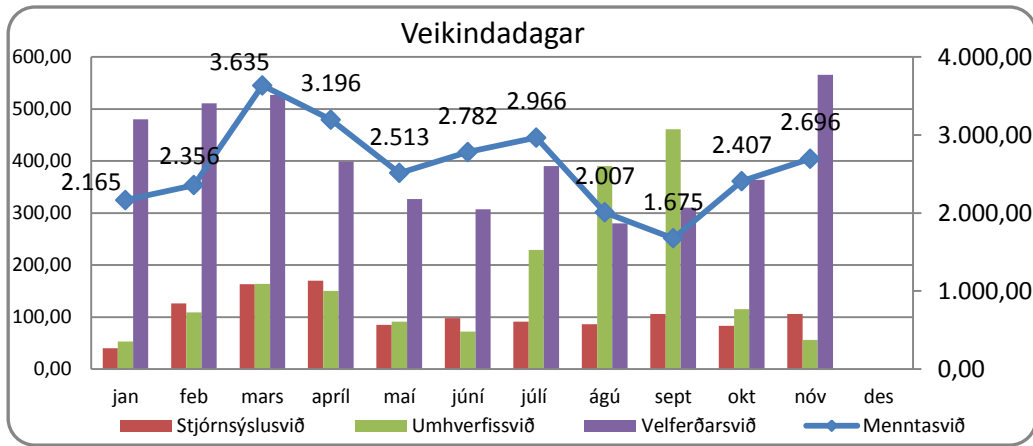
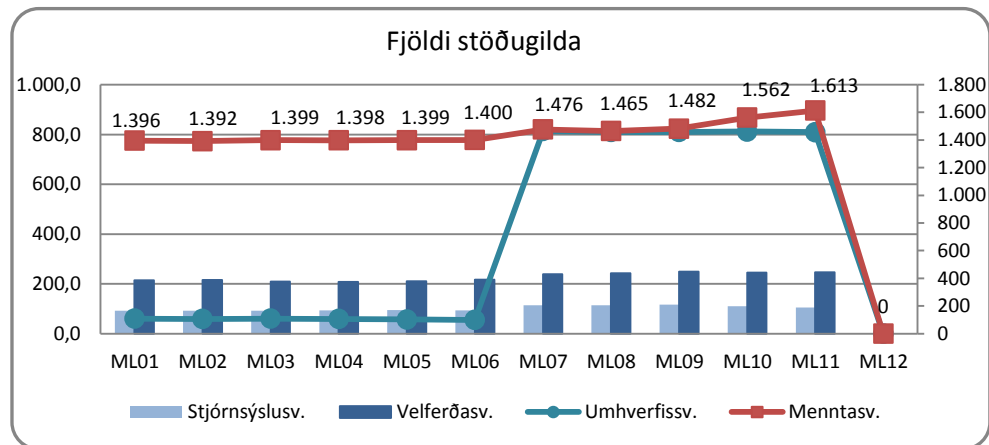
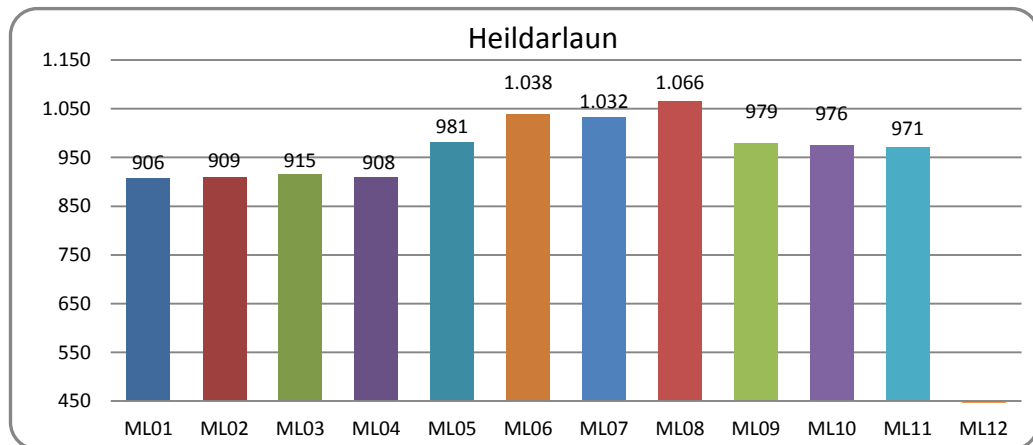


Ýmsar mælingar





Starfsmannamál



Heildarlaun starfsmanna Kópavogsbæjar eru í milljónum króna. ML11 stendur fyrir útborguð mánaðarlaun 1. nóvember. Tölur eru með launatengdum gjöldum.